



PRODUCT MANUAL



can-am MAVERICK TRAIL & SPORT
EXPEDITION RACK

can-am MAVERICK TRAIL & SPORT EXPEDITION RACK

PART#	DESCRIPTION
RB05160	Can-Am Maverick Trail & Sport™ Expedition Rack™ (MOUNTING HARDWARE INCLUDED)



We designed our Expedition Can-Am Maverick Trail & Sport Rack to take all the abuse that the Can-Am Maverick Trail & Sport can dish out. The RBO Expedition Rack™ is made from 1.5” Diameter Steel Tubing. It has a rugged powder coated finish and is manufactured by us right here in IDAHO. The Tailgate can be locked with a Pad-Lock so you can keep your possessions locked and secured from thieves. The Tailgate on our Expedition Rack has a gas strut to hold the tailgate open and out of the way. The Expedition Rack also features our “It Fits”™ RBO Mounting system. With the “It Fits”™ mounting system you can quickly and easily install any RBO accessory with the “It Fits”™ icon. Carrying a fuel can, water jug or spare tire has never been easier or cooler looking then by using the “It Fits”™ RBO Mounting system on your Expedition Rack.

The RBO Expedition Cargo Rack comes with everything you need to install it on your machine without drilling or modifying your machine. It is designed to work with Can-Am Maverick Trail & Sport Models. When it comes to satisfaction, we believe in backing up our products. That’s why we offer a 30 Day money back guarantee*. Experience today why so many people are installing a RBO Cargo Rack on their Side x Side UTV.

Can-Am Maverick Trail & Sport™ Expedition Rack™ Fitment Chart	
Year	Product Fitment
2018 - Current	Maverick Trail™
2018 - Current	Maverick Sport™

LIMITATION OF LIABILITY

Inventive Edge LLC total liability for any and all losses and damages arising out of any cause whatsoever shall in no event exceed the purchase price of the products or parts in respect of which such cause arises, whether such cause be based on theories of contract, negligence, strict liability, tort or otherwise. Inventive Edge LLC shall not be liable for incidental, consequential or punitive damages or other losses. Inventive Edge LLC shall not be liable for, and consumer assumes liability for, all personal injury and property damage connected with the handling, transportation, possession, installation, other use or resale of the product, whether used alone or in combination with any other product or material. If Inventive Edge LLC furnishes technical advice to consumer, whether or not at consumer's request, with respect to installation, application, or use of the product and/or its related parts, Inventive Edge LLC shall not be liable for such technical advice and buyer assumes all risks of such advice and the results thereof. NOTE: Some states do not allow the limitation or exclusion of incidental or consequential damages, so the above limitations or exclusions, wholly or partially, may not apply. The portions of this limited warranty and limitation of liability shall be considered severable and all portions that are not disallowed by applicable law shall remain in full force and effect.



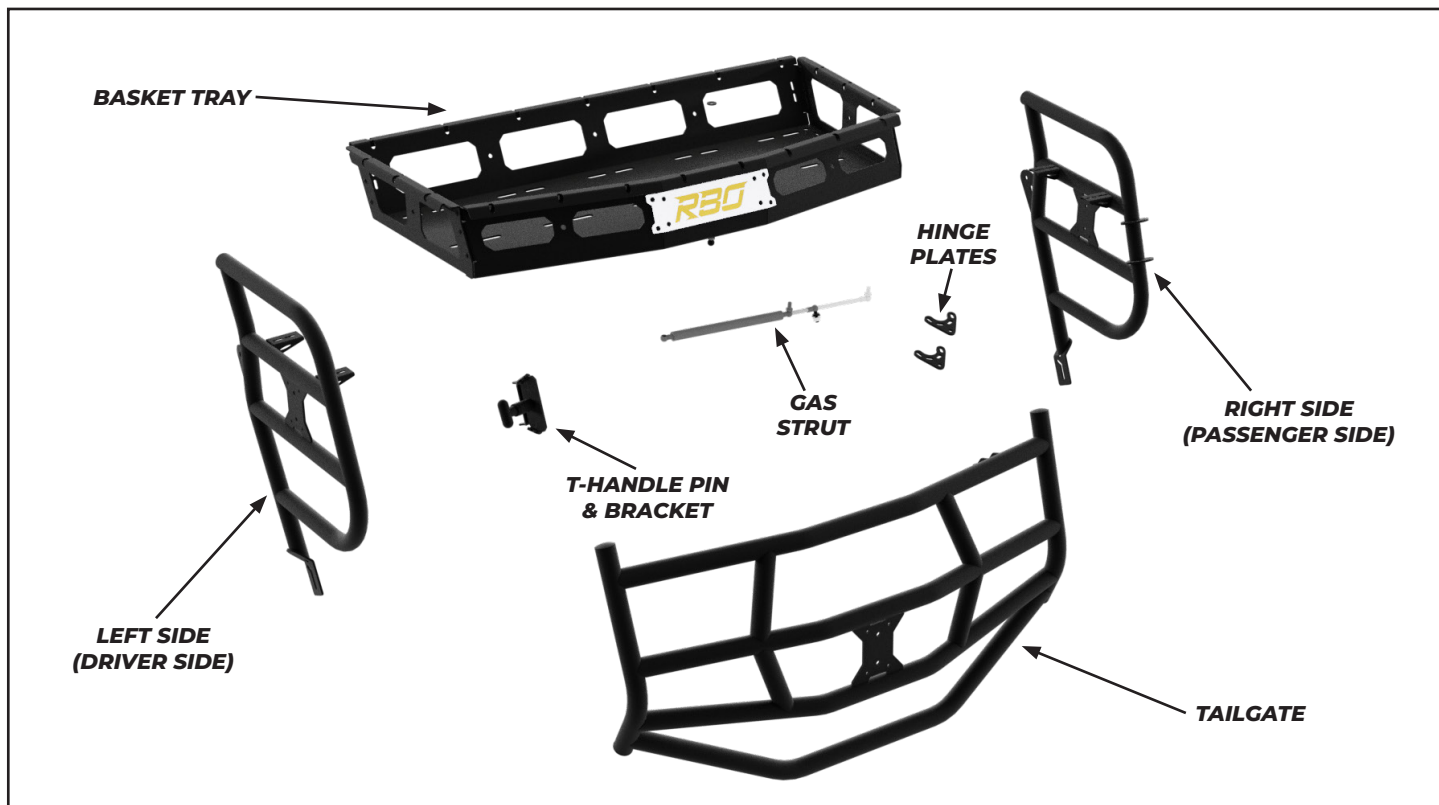
INCLUDED MOUNTING HARDWARE

- (10) - 1/4" x 3/4" Hex Flange Bolt
- (4) - M8-1.25 x 25 MM Hex Flange Bolt
- (2) - M10-1.5 x 25 MM Flange Bolt
- (2) - M10-1.5 Flange Nylock Nut
- (8) - 5/16" x 3/4" Zinc Socket Cap Screw
- (2) - 3/8" x 3/4" Shoulder Bolt
- (10) - 1/4" Flange Nylock Nut
- (10) - 5/16" Flange Nylock Nut
- (4) - 3/8" Tin Plated Brass Washer
- (1) - Pop Pin 3/8" Tip T-Handle Pin
- (1) - 1/4" Allen Wrench
- (1) - 3/16" Allen Wrench

TOOLS REQUIRED FOR INSTALLATION

- 3/8" Box Wrench/Socket
- 7/8" Box Wrench/Socket
- 1/2" Box Wrench/Socket

Installation Instructions



The following are general instructions for installation of the Can-Am Maverick Trail and Sport Expedition Rack

- It is the up to the installer to ensure that each rack be securely mounted.
- RBO recommends using two people for install.
- Begin by removing the plastic panels located on the sides of the bed (Figs. 1 & 2)



Fig. 1 - Passenger Side



Fig. 2 - Driver Side

-Remove the two rear tubes located on both sides (Fig.3)

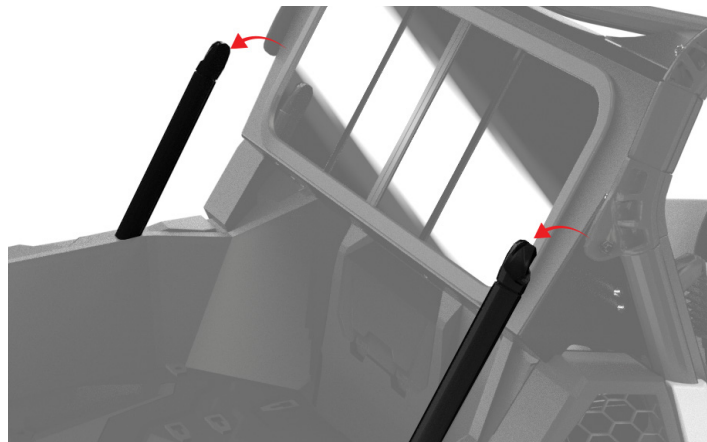


Fig. 3

-Place the driver and passenger sides of the rack in place of the rear tubes that were removed (Fig. 5)
-Bolt loosely into place (Figs. 6, 7, & 9)



Fig. 4

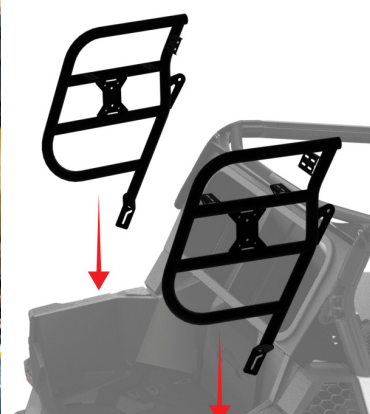


Fig. 5

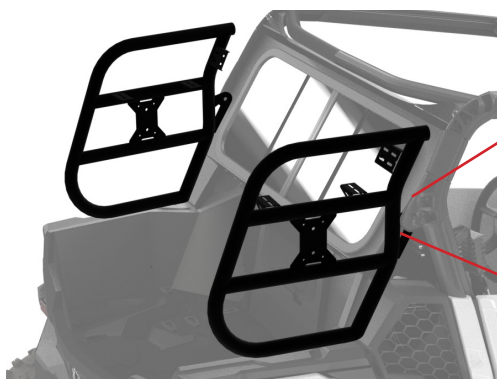


Fig. 6



Fig. 7-Outside View

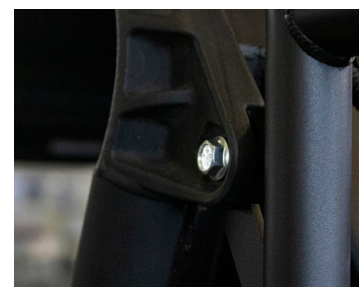


Fig. 8-Top Bolts

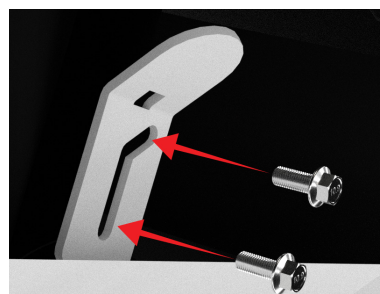


Fig. 9-Lower Bolts



Fig. 10-Lower Bolts

- Place the basket as shown (Fig. 11)
- Tighten the bottom bolts to attach the basket to the driver and passenger sides (Figs. 12 & 13)

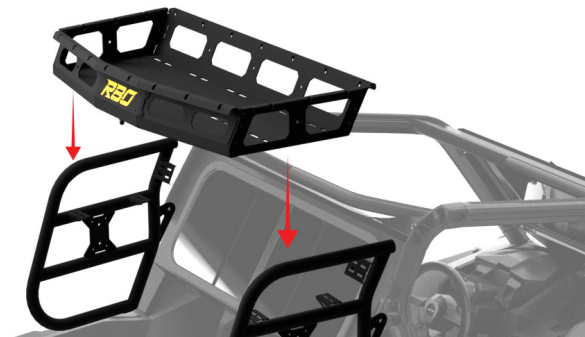


Fig. 11



Fig. 12



Fig. 13



Fig. 14



Fig. 15

- Tighten the bolts located to the front of the basket to the driver and passenger sides, 2 on each side (Figs. 16, 17, & 18)

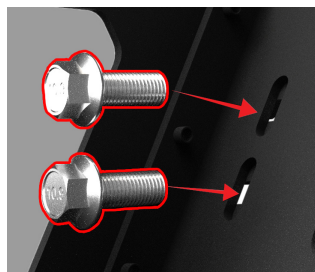


Fig. 16-Inside Basket View

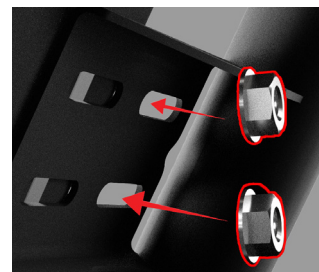


Fig. 17-Outside Basket View



Fig. 18

-Attach the latch plate to the driver side assembly oriented as shown (Figs. 19 & 20)



Fig. 19



Fig. 20

-Locate the Hinge Adjustment Plates and bolt them to the passenger side assembly (Fig. 22)



Fig. 21

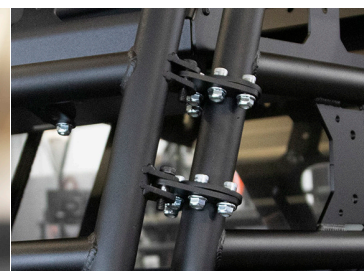


Fig. 22

-Attach the T-Pin Handle to the tailgate (Fig. 23)



Fig. 23

-Lift tailgate into position aligning the hinge plates. Loosely install the shoulder bolts. (Figs. 24 & 25)



Fig. 24



Fig. 25

-Tighten all bolts starting at the machine mountings points, to the basket, and finally at the tailgate



Fig. 26

-Attach the gas strut to the gas strut ball stud on the basket (Fig. 27). Attach the other end to the to the gas strut ball stud on the tailgate (Fig. 28)
- Ensure that the tailgate opens and closes smoothly.

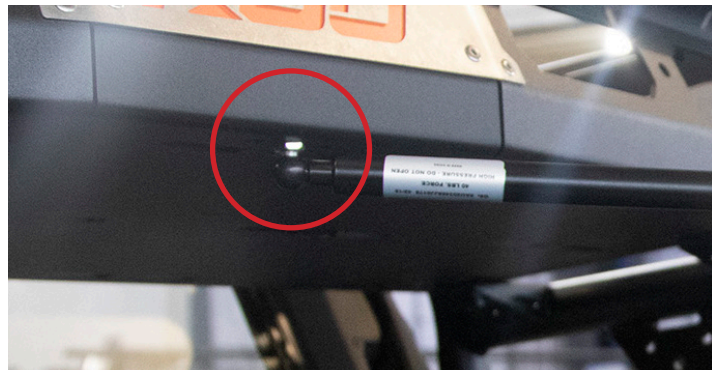


Fig. 27



Fig. 28



Fig. 29



Tie Down Points

- The Can-Am Maverick Trail and Sport Expedition Rack has multiple different tie-down points. This gives you many options on how to secure any load.



! WARNING !

- CAUTION Loads must be equally distributed
- Operator must use common sense when loading rack so as not to affect the vehicles safe operation
- It Is The operators responsibility to follow all manufactures recommendations regarding safe operation of any vehicle
- Before Transporting Flammable Liquids Please Read and Understand your Vehicles Owners Manual
- Operator must follow your vehicle manufactures warnings regarding fuel transportation
- Only Use Containers Approved For Off-road Use
- Failure to Follow Proper Instructions could lead to Burn Injury and other potential Fire Hazards
- Be Sure To Comply with All Laws and Warnings Regarding the Safe Handling Of Flammable Liquids
- When In Doubt - Consult Your Local Fire Department
- Don't Take Risk "Center of Gravity" C.G. that could increase the potential for Roll Over
- It Is The Operators Responsibility to follow all manufactures recommendations regarding safe operation of the vehicle

! WARNING !

- Loading Heavy Items on the Rack will change the vehicles "Center of Gravity" (C.G.) that could increase the potential for roll over which could result in serious injury or death
- Maximum Combined Capacity of Cargo Rack is 120 lbs. (Limited by Vehicle Capacity)
- Load Capacity of Top Rack is 60 lbs. (Limited by Vehicle Capacity)
- Load Capacity of Side Rack is 30 lbs. per side (Do Not Recommend Mount Spare Tires on Side Racks)

“It Fits™” Mounting System

With the “It Fits™” mounting system you can quickly and easily install any RBO accessory with the “It Fits™” icon. This rack comes with everything you need to install it on your machine without drilling or modifying your machine.



The Can-Am Maverick Trail and Sport Expedition Rack (RB05160) has multiple “It Fits™” mounting locations throughout the assembly.



! WARNING !

-That by adding mounts to the side of the vehicle you make it wider.

-Be Sure To Comply with All Laws and Warnings Regarding the Safe Handling Of Flammable Liquids.



PH: (208) 696-7230

inventive edge, LLC 3190 industrial way, Mountain Home, ID 83647

RB00164R2