



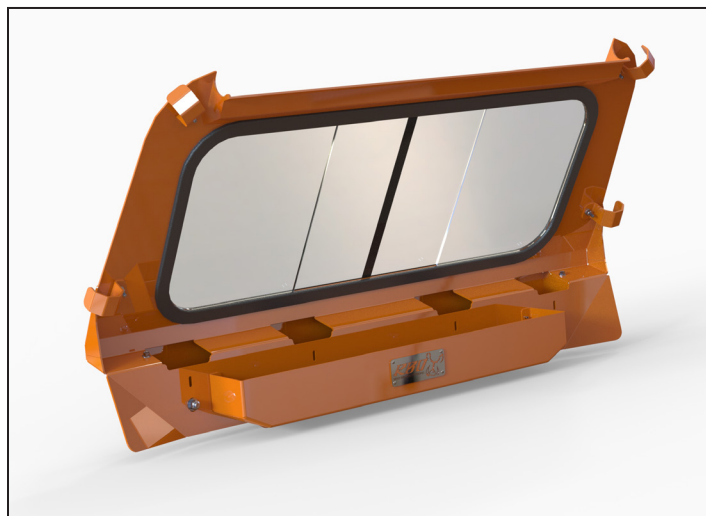
OPERATIONS MANUAL



POLARIS RZR® 1000 REAR SLIDING WINDOW (DUST ELIMINATOR)

POLARIS RZR® 1000 REAR SLIDING WINDOW (DUST ELIMINATOR)

| PART# | DESCRIPTION |
|---------|---|
| RB04038 | Polaris RZR® 1000 Rear Sliding Window (Dust Eliminator) (MOUNTING HARDWARE INCLUDED) |

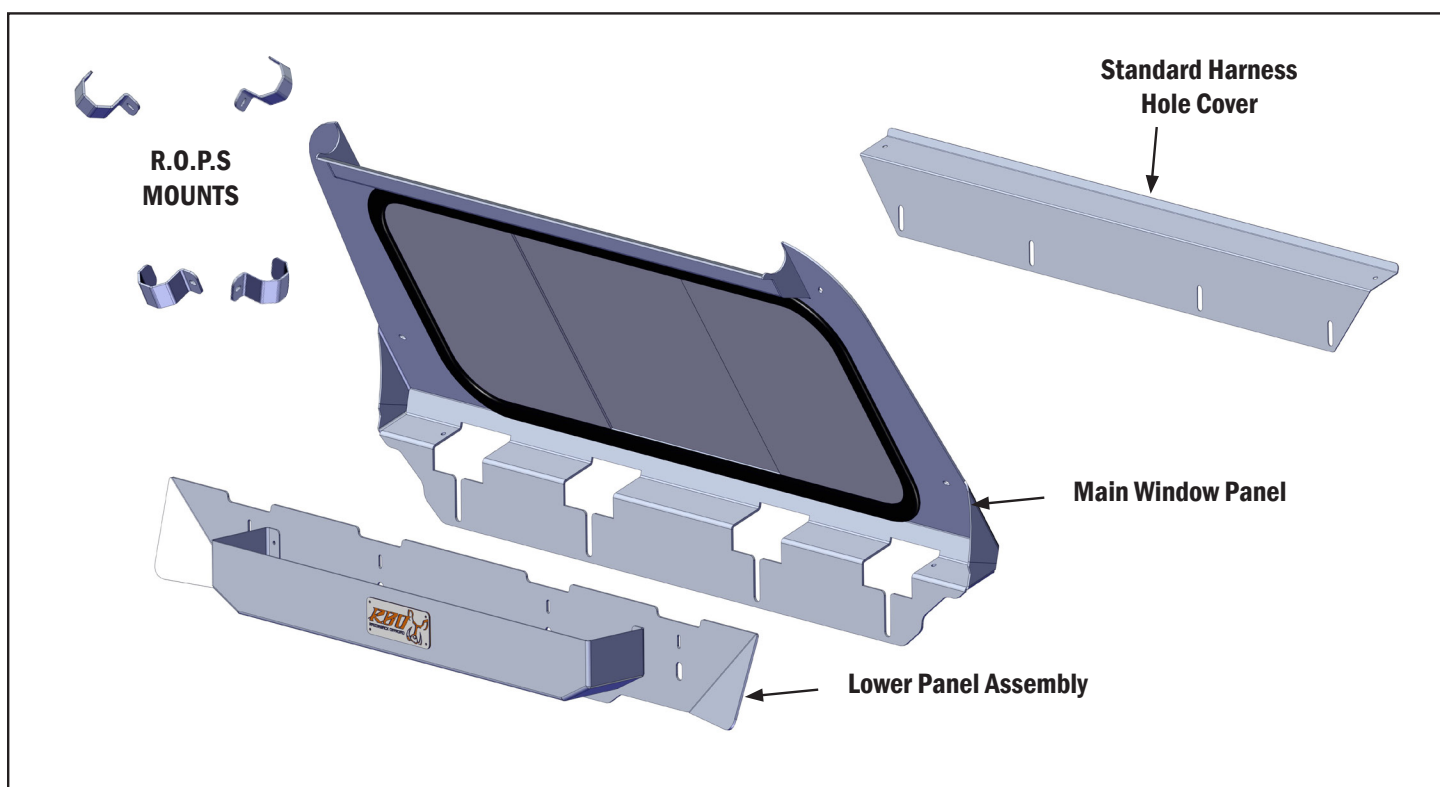


If you are tired of Dust getting into your Side X Side. Take a look at the RBO Dust Eliminating Rear Sliding Window. We have the best sealing window in the industry that will significantly reduce dust inside your Side x Side UTV cab. Like our front windshield, our rear sliding window has one of the industry's largest window. We try to combine function and quality to provide the driver the best experience possible. The Rear Sliding Polaris Side x Side window gives you the option to open the rear window and allow air into the cab as well as an access point to the cargo box. We also incorporated a custom storage tray that is built right into the rear Window assembly making a great place to store, Gloves, Hats, Binoculars and just about anything else that you can think of.

| Polaris RZR® 1000 Rear Sliding Window (Dust Eliminator) Fitment Chart | |
|---|--------------------------------------|
| Year | Product Fitment |
| 2014 - Current | RZR XP 1000 |
| 2015 - Current | RZR XP Turbo 1000 |
| 2015 - 2018 | RZR XP Turbo Fox Edition |
| 2015 - 2019 | RZR XP Turbo Dynamix Edition |
| 2015 - 2019 | RZR XP 1000 Ride Command |
| 2015 - 2019 | RZR XP 1000 Trails and Rocks Edition |
| 2019 | RZR XP Turbo LE |
| 2019 | RZR XP 1000 EPS Dynamics |
| 2019 | RZR XP Dynamics Editionv |



Installation Instructions



INCLUDED MOUNTING HARDWARE

- (4) 1/4" Flanged Nylock Nut
- (4) 1/4" X 1" Flanged Bolt
- (4) 3/8" Flanged Nylock Nut
- (4) 3/8" X 1" Flanged Bolt

REQUIRED TOOLS FOR INSTALLATION

- 7/16" END WRENCH
- 3/8" END WRENCH
- T30 TORX driver

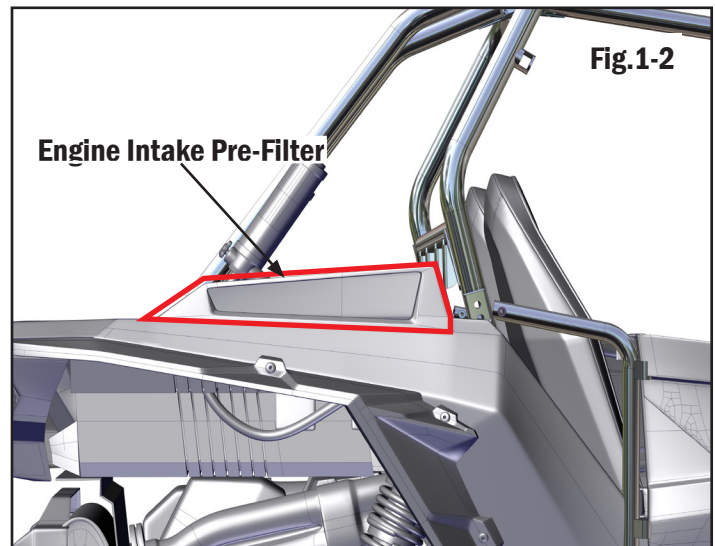
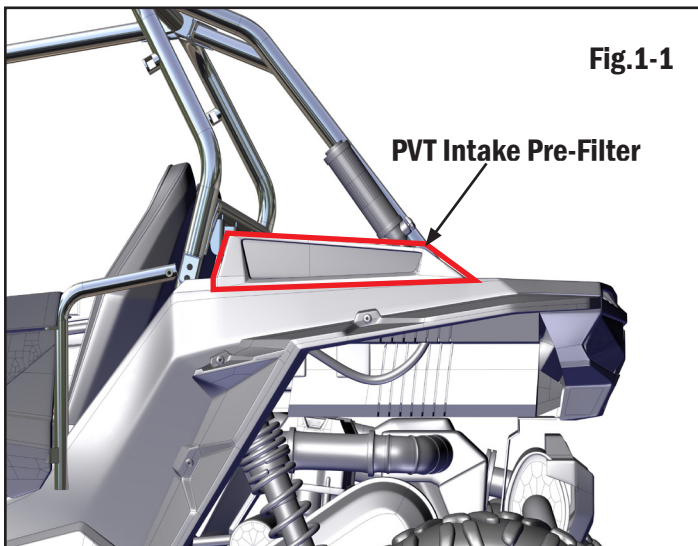
Remove Intake Pre-Filters

- Remove the PVT Intake Pre-Filter located on the driver side of the vehicle and the Clutch Intake Pre-Filter on the passenger side to give you access to the R.O.P.S. to install your Polaris RZR® 1000 Rear Sliding Window

See Fig. 1-1 and Fig. 1-2

- Remove the four torx mounting bolts on the Pre-Filters. Make sure you keep mounting bolts for re-installation

See Fig. 1-3 and Fig. 1-4



Place the Lower Panel Assembly

- From the rear, place the Lower Panel Assembly by sliding it up in to place
- The two inner R.O.P.S. seat belt mounts will fit in to the Lower Panel Tray

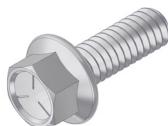
See Fig. 2-1 and Fig. 2-2



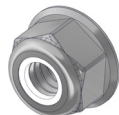
Place the Main Panel

- The Main Panel can now be put in to place
- The lower mounting holes will go through the mounting holes of the Lower Panel Assembly and the R.O.P.S. seat belt mounting holes
- Use the provided hardware

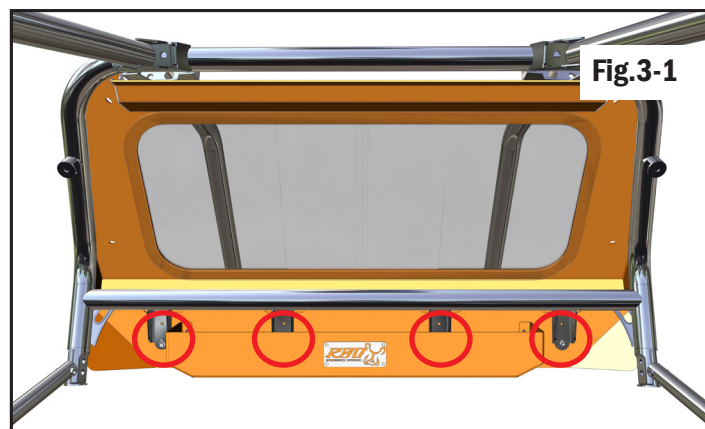
(4) - 3/8" X 1" Hex Flange Bolt



(4) - 3/8" Nylock Flange Nut



See Fig. 3-1 and Fig. 3-2



Install ROPS Mounts

- Loosely install the Main panel R.O.P.S. Mounts with the following provided hardware

(4) - 1/4" X 1" Hex Flange Bolt



(4) - 1/4" Nylock Flange Nut



See Fig. 4-1 to Fig. 4-5

-Tighten all ha

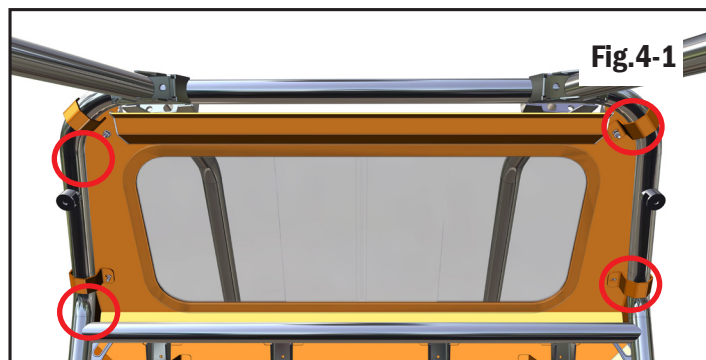


Fig.4-1

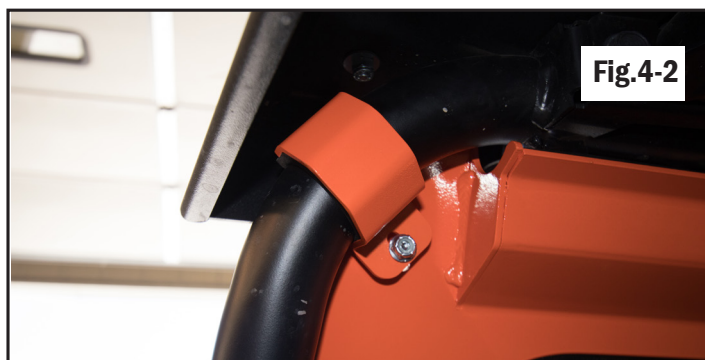


Fig.4-2



Fig.4-3



Fig.4-4



Fig.4-5

Re-Install Intake Pre-Filters

- Re-install the PVT intake Pre-Filters using the saved factory hardware

See Fig. 5-1 and Fig. 5-2



SLIDING WINDOW LATCH

- The sliding window gives you the option to allow air into the cab as well as an access point to the cargo box from inside the cab.

- It comes with a easy to use sliding window latch.



STORAGE TRAY

The storage tray located on the lower window assembly gives you extra storage behind your seats



RZR® 1000 RETRACTABLE HARNESS COVER

| PART# | DESCRIPTION |
|---------|---|
| RB04045 | RETRACTABLE HARNESS COVER (MOUNTING HARDWARE INCLUDED) |



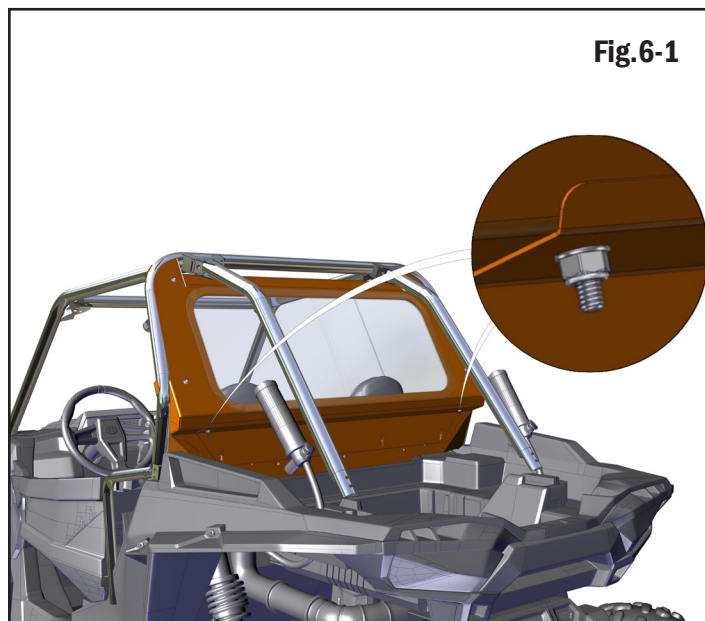
Using The RB04045 Retractable Harness Cover, it is easy to bolt the Polaris 6 Click Retractable Harness right onto our RB04038 Polaris RZR® 1000 Rear Sliding Window and still keep a tight seal. All mounting hardware is included as well as a full gasket to keep dust, weather, and any other harsh conditions you may run into off your Retractable Harness System; keeping them in top working condition for when it matters most. The RB04045 can be ordered in Black or RBO Orange Powder coat to match your RZR® 1000 Rear Sliding Window.



Remove Harness Hole Cover

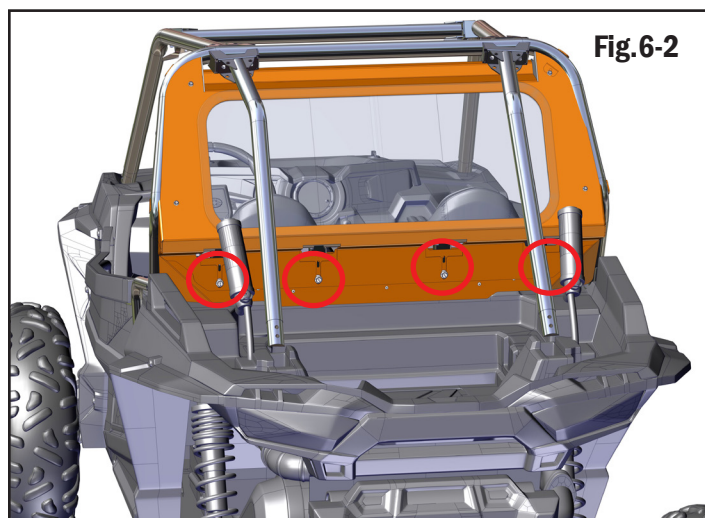
- Remove the top two existing bolts holding on the standard Harness Hole Cover.

See Fig. 6-1



- Remove the four mounting bolts from the seat belt harness holes

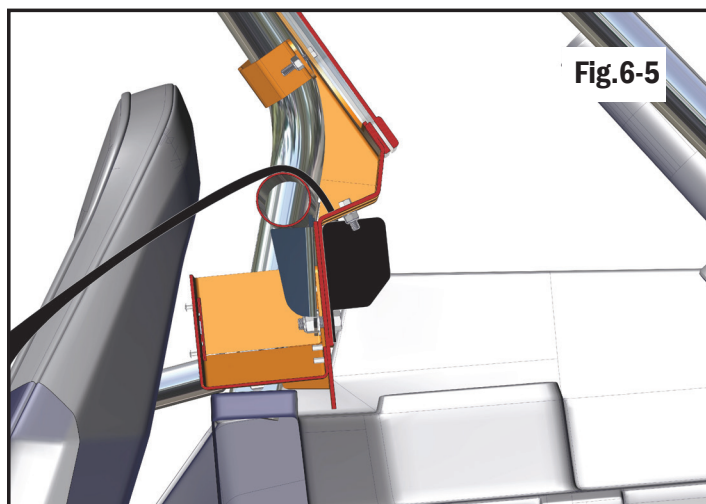
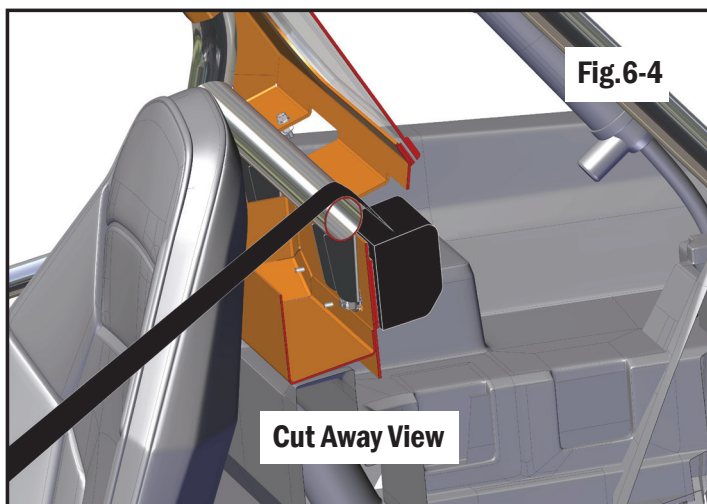
See Fig. 6-2



- Install your six point harness by running the belts up through the belt holes in the main panel and install the seat belt mounting housing with the removed hardware

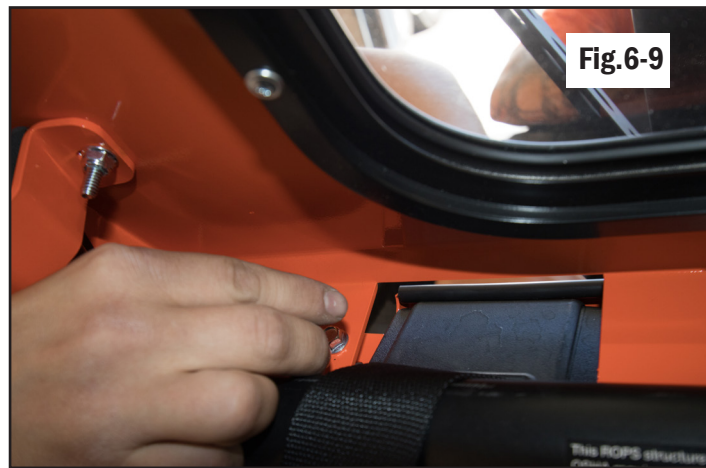
See Fig.6-3 to Fig.6-7





- Install the Retractable Harness Cover with two top bolts removed from the previous steps

See Fig. 6-8 to Fig. 6-9





PH: (208) 696-7230

inventive edge, LLC 3190 industrial way, Mountain Home, ID 83647

