



2019
razorback offroad

PRODUCTS

CATALOG



VOLUME-1 EDITION-DEUX



RAZORBACK OFFROAD™

is a company that was founded out of our passion for off-roading. You may say this company chose us. All we ever wanted to do was ride and explore the outdoors. Building UTV accessories came easy to us, as we are always trying to maximize our off-road experience and get the most out of each trip we take.

We have worked hard to develop products that are not only useful, but will hold up year after year, mile after mile, trip after trip. From our modest beginnings in Weiser, Idaho to our new facility in Mountain Home, Idaho, we have never lost our passion for what we do.

When you purchase a Razorback product you can feel good about knowing that we care about each and every product that goes out our doors. Everyone here is committed to building the best products we can to help you maximize your off-roading experience. If you are ever in Mountain Home, please stop by and visit. We would love to give you a tour of facility and show you how we build our products.

RAZORBACK OFFROAD™ products are proudly built in Idaho, USA.

PROUDLY MADE IN
USA 

NO LIMITATIONS



JOIN US
IN CHANGING
AN INDUSTRY

RAZORBACKOFFROAD.COM

(208) 696-7230

Prices are subject to change

TABLE OF CONTENTS

CARGO RACKS-

Rack List	PG. 5-6
Expedition Rack	PG. 7-12
1000 2-SEATER	PG. 9
1000 4-SEATER	PG. 10
900	PG. 11
570-800	PG. 12
Sherpa Rack	PG. 13-18
1000 2-SEATER	PG. 15
1000 4-SEATER	PG. 16
900	PG. 17
CFMOTO®	PG. 18
Explorer Rack	PG. 19-20
BAJA	PG. 21-22
GENERAL GP RACK	PG. 23-24
Ranger® UTILITY CARGO RACK	PG. 25-26

ROOF & AIRFOIL-

OVERVIEW	PG. 27-28
ROOF	PG. 28
AIRFOIL	PG. 28

WINDSHIELDS-

FRONT FOLDING WINDOW OVERVIEW	PG. 29-35
900/1000	PG. 31 - 32
2019- Current 1000	PG. 33 - 34
570/800	PG. 35
REAR SLIDING WINDOW OVERVIEW	PG. 36-38
900	PG. 37
1000	PG. 38

ACCESSORIES-

OVERVIEW	PG. 39
it fits spare tire mount	PG. 40
CFMOTO® spare tire mount	PG. 41
Ranger® spare tire mount	PG. 42
it fits universal tool mount	PG. 43
it fits Rotopax mount	PG. 44
Rotopax / Fuelpax	PG. 44
Polaris RZR Gun Rack / Grab Handle / Lug wrench	PG. 45
CFMOTO® Rock sliders	PG. 46
Ruff Rider Heat shield	PG. 47-48
RBO Apparel - shirts / Hoodies	PG. 49
RBO Apparel - snapback hats	PG. 50



Cargo Racks

RBO
ACCESSORIES



Roof &
Airfoil

Folding
Windshields



LOOK FOR THESE
FEATURE ICONS



IT FITS
MOUNTS



Approved
GLASS



TIE-DOWN
POINTS



LOCKABLE



ADJUSTABLE



NO
MODIFYING



MORE INFO
ONLINE



(208) 696-7230

Prices are subject to change

RAZORBACK OFFROAD

THE RACK LIST



**EXPEDITION
RACK**



**the
SHERPA**



**the
EXPLORER**



Baja



**GENERAL
GP RACK**



RANGER
UTILITY CARGO RACK



**CARRY MORE
THAN EVER BEFORE**



(208) 696-7230

Prices are subject to change

EXPEDITION RACK

TRAY

- 1/8" MARINE GRADE ALUMINUM
- MULTIPLE TIE DOWN LOCATIONS

REAR TAILGATE

- 1X "IT-FITS"™ MOUNTING BASE
 - "IT-FITS"™ SPARE TIRE MOUNT
 - "IT-FITS"™ ROTOPAX/FUELPAX MOUNT
 - "IT-FITS"™ UNIVERSAL TOOL MOUNT
- GAS STRUT
- LOCKABLE (WITH PAD-LOCK)
- EASY GRAB T-HANDLE
- RBO ULTRA HINGES

DESIGN

- MADE WITH 1.5" DIAMETER STEEL TUBING
- POWDER COATED
- LIGHT MOUNTS

SIDE-RACK

- 2X "IT-FITS"™ MOUNTING BASES
 - "IT-FITS"™ ROTOPAX/FUELPAX MOUNT
 - "IT-FITS"™ UNIVERSAL TOOL MOUNT

EXTRAS

- MADE IN THE USA
- EASY INSTALL
- NO DRILLING REQUIRED
- CAN BE INSTALLED USING ONLY BASIC HAND TOOLS
- ALL MOUNTING HARDWARE INCLUDED



3X "IT-FITS"™ MOUNTING LOCATIONS

3 "IT-FITS"™ MOUNTS GIVE YOU PLENTY OF OPTIONS WHEN MOUNTING ANY ACCESSORY TO YOUR SIDE BY SIDE!



RBO ULTRA HINGES

WE DESIGNED OUR HINGES TO TAKE A BEATING, SO OUR TAILGATE WILL SHUT SMOOTH EVERY TIME.



GAS STRUT FOR REAR TAILGATE

THE GAS STRUT WE PUT ON THE REAR TAILGATE MAKES SURE OUR REAR TAILGATE STAYS OPEN, EVEN WHEN IT'S LOADED DOWN WITH GEAR.



REAR TAILGATE

THE EXPEDITION IS THE ONLY RACK IN OUR LINEUP THAT COMES WITH A GAS STRUT SUPPORTED REAR TAILGATE THAT KEEPS ALL YOUR GEAR/ACCESSORIES SECURE IN THE BACK OF YOUR UTV, WITHOUT HAVING TO TIE ANYTHING DOWN!



MULTIPLE TIE DOWN LOCATIONS

MULTIPLE TIE DOWN POINTS MACHINED INTO THE UPPER TRAY, YOU NEVER HAVE TO STRUGGLE KEEPING YOUR GEAR SECURE WHEN TRAVELING DOWN EVEN THE TOUGHEST TRAILS.



LOCKABLE

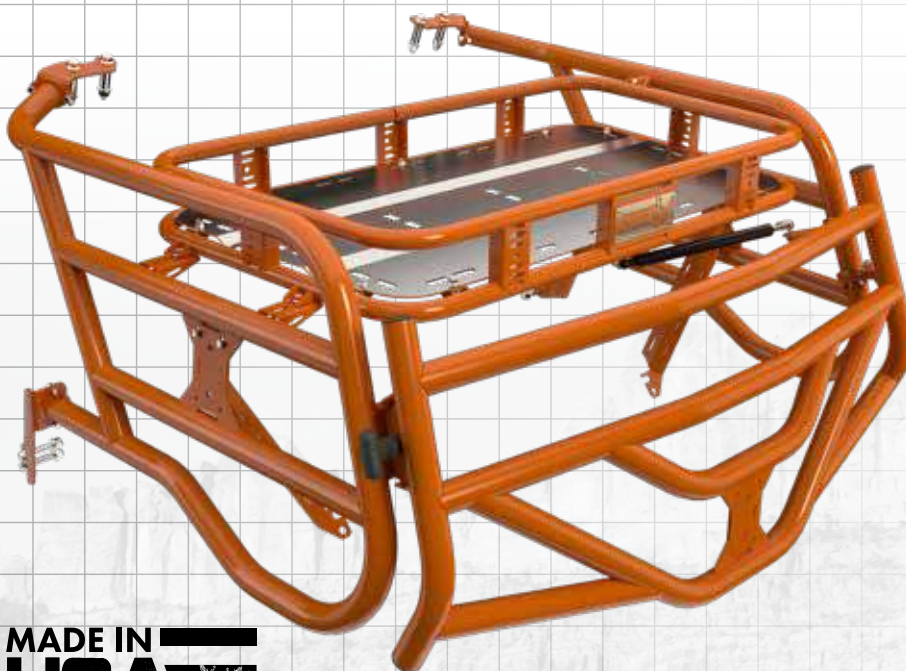
FEEL THE ULTIMATE PEACE OF MIND WHILE ON THE ROAD. OUR REAR TAILGATE CAN BE PAD-LOCKED, PREVENTING THEFT.

(208) 696-7230

Prices are subject to change



POLARIS RZR® 1000 EXPEDITION RACK™



**MADE IN
USA**

POLARIS®
2 SEAT

FITS ALL MODELS OF

- 2015 - 2019 Polaris RZR® XP® 1000
- 2015 - 2019 Polaris RZR® XP® Turbo
- 2015 - 2018 Polaris RZR® XP® Turbo Fox Edition
- 2015 - 2019 Polaris RZR® XP® Turbo Dynamix Edition
- 2015 - 2019 Polaris RZR® SP 1000 Trails and Rocks Edition
- 2015 - 2019 Polaris RZR® XP® 1000 Ride Command
- 2019 Polaris RZR® XP® Turbo LE
- 2019 Polaris RZR® XP® 1000 EPS Dynamics

PART #	MSRP	FINISH
RB05100	\$987.99	Black





POLARIS RZR®1000 4 EXPEDITION RACK™



FITS ALL MODELS OF

- 2015 - 2019 Polaris RZR® 4 Turbo
- 2015 - 2018 Polaris RZR® 4 Turbo Fox Edition
- 2015 - 2019 Polaris RZR® 4 Turbo Dynamix Edition
- 2019 Polaris RZR® XP® 4 Turbo LE
- 2015-2019 Polaris RZR® 4 1000 Ride Command Edition

MADE IN
USA



PART #	MSRP	FINISH
RB05116	\$1,019.19	Black

(208) 696-7230

Prices are subject to change



POLARIS RZR® 900 EXPEDITION RACK™



POLARIS
2 SEAT

FITS ALL MODELS OF

- 2015 - 2019 Polaris RZR® 900
- 2015 - 2018 Polaris RZR® 900 Trail
- 2015 - 2018 Polaris RZR® 900 EPS
- 2015 - 2018 Polaris RZR® EPS XC
- 2015 - 2019 Polaris RZR® S 900
- 2015 - 2018 Polaris RZR® S 900 EPS
- 2015 - 2019 Polaris RZR® S 1000
- 2015 - 2018 Polaris RZR® S 1000 EPS

MADE IN
USA

PART #	MSRP	FINISH
RB05040	\$935.99	Black





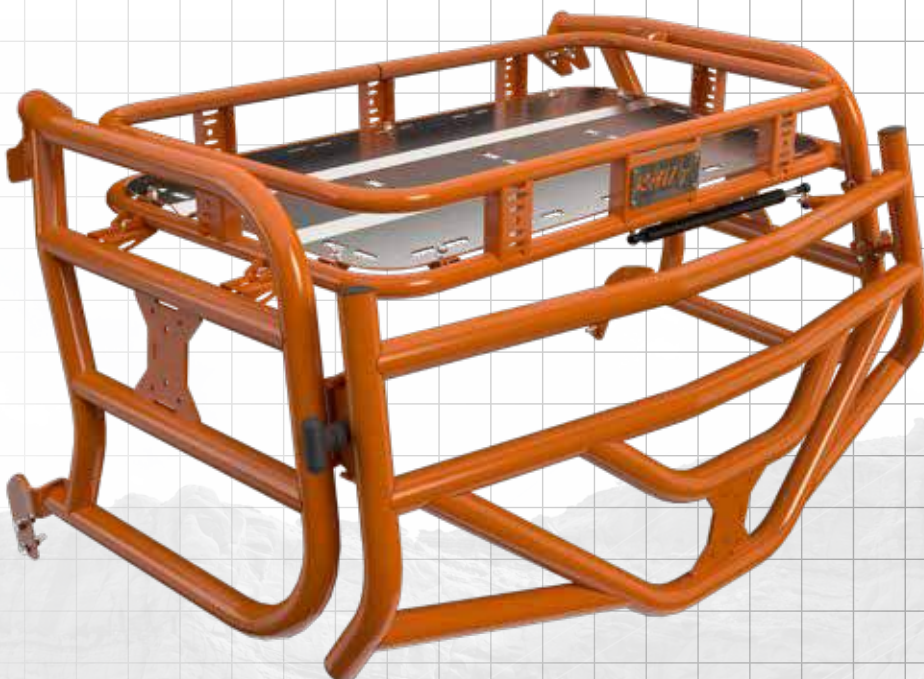
POLARIS RZR® 570-800 EXPEDITION RACK™



FITS ALL MODELS OF

- 2012-2019 Polaris RZR® 570
- 2012-2019 Polaris RZR® 570 EPS
- 2012-2014 Polaris RZR® 800

**MADE IN
USA**



PART #	MSRP	FINISH
RB05140	\$935.99	Black

(208) 696-7230

Prices are subject to change

The SHERPA

TRAY

- 1/8" MARINE GRADE ALUMINUM
- MULTIPLE TIE DOWN LOCATIONS



DESIGN

- MADE WITH 1.5" DIAMETER STEEL TUBING
- POWDER COATED
- LIGHT MOUNTS

EXTRAS

- MADE IN THE USA
- EASY INSTALL
- NO DRILLING REQUIRED
- CAN BE INSTALLED USING ONLY BASIC HAND TOOLS
- ALL MOUNTING HARDWARE INCLUDED

SIDE-RACK

- 2X "IT-FITS"™ MOUNTING BASES
- "IT-FITS"™ ROTOPAX/FUELPAX MOUNT
- "IT-FITS"™ UNIVERSAL TOOL MOUNT



2X "IT-FITS"™ MOUNTING LOCATIONS

2 "IT-FITS"™ MOUNTS GIVE YOU PLENTY OF OPTIONS WHEN MOUNTING ANY ACCESSORY TO YOUR SIDE BY SIDE!



COMPATIBLE WITH ANY "IT-FITS"™ ACCESSORY

OUR "IT-FITS"™ MOUNTING SYSTEM ALLOWS YOU TO CARRY ALMOST ANYTHING ON THE SIDE OF YOUR UTV!



LIGHTWEIGHT - EASY ACCESS

SINCE THE SHERPA DOESN'T HAVE A REAR TAILGATE, IT'S CONSIDERABLY LIGHTER, AND GIVES YOU EASY ACCESS TO ALL OF YOUR SUPPLIES WHENEVER YOU MIGHT NEED THEM!



MULTIPLE TIE DOWN LOCATIONS

WITH MULTIPLE TIE DOWN POINTS CUT INTO THE UPPER TRAY, YOU NEVER HAVE TO STRUGGLE KEEPING YOUR GEAR SECURE WHEN TRAVELING DOWN EVEN THE TOUGHEST TRAILS.



UNPARALLELED CARGO CAPACITY

WE DESIGNED THE SHERPA TO GIVE YOU THE EXTRA CAPACITY TO CARRY JUST ABOUT ANYTHING YOU NEED ONTO THE TRAIL. IT DOESN'T MATTER WHERE YOU'RE GOING, YOU WILL HAVE ENOUGH SPACE TO PACK WHAT YOU NEED TO GET THERE.



EASY INSTALLATION

WITH NO DRILLING NEEDED, AND ALL HARDWARE REQUIRED FOR INSTALLATION INCLUDED, YOU'LL BE RIPPING IN NO TIME.

(208) 696-7230

Prices are subject to change



POLARIS RZR® 1000 **SHERPA RACK™**



**MADE IN
USA**



2 SEAT

FITS ALL MODELS OF

- 2015 - 2019 Polaris RZR® XP® 1000
- 2015 - 2019 Polaris RZR® XP® Turbo
- 2015 - 2018 Polaris RZR® XP® Turbo Fox Edition
- 2015 - 2019 Polaris RZR® XP® Turbo Dynamix Edition
- 2015 - 2019 Polaris RZR® SP 1000 Trails and Rocks Edition
- 2015 - 2019 Polaris RZR® XP® 1000 Ride Command
- 2019 Polaris RZR® XP® Turbo LE
- 2019 Polaris RZR® XP® 1000 EPS Dynamics
- 2019 Polaris RZR® XP® Dynamics Edition

PART #	MSRP	FINISH
RB05099	\$727.99	Black





POLARIS RZR®1000 4 SHERPA RACK™



FITS ALL MODELS OF

- 2015 - 2019 Polaris RZR® 4 1000
- 2015 - 2019 Polaris RZR® 4 Turbo
- 2015 - 2018 Polaris RZR® 4 Turbo Fox Edition
- 2015 - 2019 Polaris RZR® 4 Turbo Dynamix Edition
- 2019 Polaris RZR® XP® 4 turbo LE
- 2015-2019 Polaris RZR® 4 1000 Ride Command Edition

MADE IN
USA



PART #	MSRP	FINISH
RB05115	\$727.99	Black

(208) 696-7230

Prices are subject to change



POLARIS RZR® 900 SHERPA RACK™



 **POLARIS®**
2 SEAT

FITS ALL MODELS OF

- 2015 - 2019 Polaris RZR® 900
- 2015 - 2018 Polaris RZR® 900 Trail
- 2015 - 2018 Polaris RZR® 900 EPS
- 2015 - 2018 Polaris RZR® EPS XC
- 2015 - 2019 Polaris RZR® S 900
- 2015 - 2018 Polaris RZR® S900 EPS
- 2015 - 2019 Polaris RZR® S 1000
- 2015 - 2018 Polaris RZR® S 1000 EPS

MADE IN
USA

PART #	MSRP	FINISH
RB05039	\$675.99	Black





CFMOTO® ZFORCE SHERPA RACK™



FITS ALL MODELS OF

- 2015 - 2019 CFMOTO® ZFORCE® 1000
- 2015 - 2019 CFMOTO® ZFORCE® 800 EX
- 2015 - 2019 CFMOTO® ZFORCE® 800 Trail
- 2015 - 2019 CFMOTO® ZFORCE® 500 Trail

**MADE IN
USA**



PART #	MSRP	FINISH
RB05125	\$727.99	Black

The EXPLORER

TRAY

- 1/8" MARINE GRADE ALUMINUM
- MULTIPLE TIE-DOWN LOCATIONS

EXTRAS

- MADE IN THE USA
- EASY INSTALL
 - NO DRILLING REQUIRED
 - CAN BE INSTALLED USING ONLY BASIC HAND TOOLS
- ALL MOUNTING HARDWARE INCLUDED

DESIGN

- MADE WITH 1.5" DIAMETER STEEL TUBING
- ULTRA LIGHTWEIGHT CONSTRUCTION
- POWDER COATED
- LIGHT MOUNTS

SIDE RACK

- 2X "IT-FITS"™ MOUNTING BASES
- "IT-FITS"™ ROTOPAX/FUELPAX MOUNT
 - "IT-FITS"™ UNIVERSAL TOOL MOUNT

EXTREME CARGO CAPACITY

JUST BECAUSE IT MAY BE SMALLER IN SIZE, DOESN'T MEAN IT CAN'T HAUL EVERYTHING YOU'D EVER NEED!

MULTIPLE; INDIVIDUAL TIE DOWN LOCATIONS

WITH MULTIPLE TIE DOWN LOCATIONS IN THE TRAY, YOU CAN SECURE ALMOST ANYTHING TO YOUR MACHINE!

2X "IT-FITS"™ MOUNTING LOCATIONS

2 "IT-FITS"™ MOUNTS GIVE YOU PLENTY OF OPTIONS WHEN MOUNTING ANY ACCESSORY TO YOUR SIDE BY SIDE!



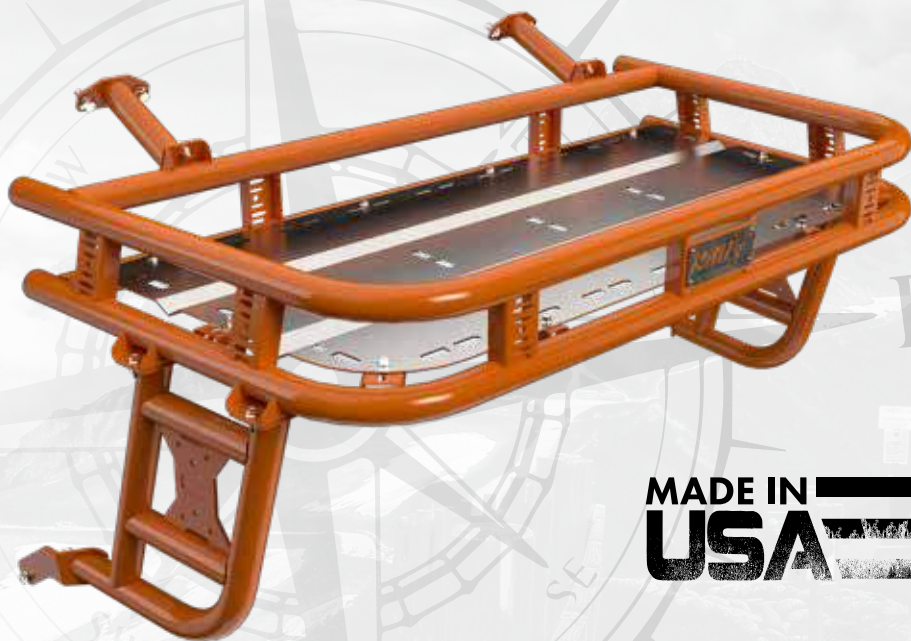
POLARIS RZR® 900 EXPLORER RACK™



2 SEAT

FITS ALL MODELS OF

- 2015 - 2019 Polaris RZR® 900
- 2015 - 2018 Polaris RZR® 900 Trail
- 2015 - 2018 Polaris RZR® 900 EPS
- 2015 - 2018 Polaris RZR® EPS XC
- 2015 - 2019 Polaris RZR® S 900
- 2015 - 2018 Polaris RZR® S 900 EPS
- 2015 - 2019 Polaris RZR® S 1000
- 2015 - 2018 Polaris RZR® S 1000 EPS



**MADE IN
USA**



PART #	MSRP	FINISH
RB05065	\$623.99	Black

(208) 696-7230

Prices are subject to change

Baja

TRAY

- 1/8" MARINE GRADE ALUMINUM
- MULTIPLE TIE-DOWN LOCATIONS



DESIGN

- MADE WITH 1.5" DIAMETER STEEL TUBING
- ULTRA LIGHTWEIGHT CONSTRUCTION
- POWDER COATED
- LIGHT MOUNTS

EXTRAS

- MADE IN THE USA
- EASY INSTALL
- NO DRILLING REQUIRED
- CAN BE INSTALLED USING ONLY BASIC HAND TOOLS
- ALL MOUNTING HARDWARE INCLUDED

EXTREME CARGO CAPACITY



JUST BECAUSE IT'S SMALLER & MORE LIGHTWEIGHT THAN ALL THE OTHER RACKS, DOESN'T MEAN IT CAN'T HAUL EVERYTHING YOU'D EVER NEED!

MULTIPLE, INDIVIDUAL TIE DOWN LOCATIONS



WITH MULTIPLE TIE DOWN LOCATIONS IN THE TRAY, YOU CAN SECURE ALMOST ANYTHING TO YOUR MACHINE!

EASY INSTALLATION



OUR RACKS DON'T REQUIRE ANY DRILLING, AND ALL THE HARDWARE YOU NEED COMES IN THE BOX!



POLARIS RZR® 900 BAJA RACK™



FITS ALL MODELS OF

- 2015 - 2019 Polaris RZR® 900
- 2015 - 2018 Polaris RZR® 900 Trail
- 2015 - 2018 Polaris RZR® 900 EPS
- 2015 - 2018 Polaris RZR® EPS XC
- 2015 - 2019 Polaris RZR® S 900
- 2015 - 2018 Polaris RZR® S 900 EPS
- 2015 - 2019 Polaris RZR® S 1000
- 2015 - 2018 Polaris RZR® S 1000 EPS



MADE IN
USA



PART #	MSRP	FINISH
RB05082	\$467.99	Black

(208) 696-7230

Prices are subject to change



TILTABLE WITH BED

WE DESIGNED THE GENERAL RACK TO BE ABLE TO TILT WITH THE BED OF THE UTV ITSELF! WHILE KEEPING ALL OF YOUR GEAR SECURE AT THE SAME TIME!



MULTIPLE INDIVIDUAL TIE DOWN LOCATIONS

WITH MULTIPLE TIE DOWN LOCATIONS IN THE TRAY, YOU CAN SECURE ALMOST ANYTHING TO YOUR MACHINE!



2X "IT-FITS"™ MOUNTING LOCATIONS

2 "IT-FITS"™ MOUNTS GIVE YOU PLENTY OF OPTIONS WHEN MOUNTING ANY ACCESSORY TO YOUR SIDE BY SIDE!

DESIGN

- MADE WITH 1.5" DIAMETER STEEL TUBING
- HEAVY DUTY CONSTRUCTION FOR DURABILITY
- POWDER COATED
- LIGHT MOUNTS



TRAY

- 1/8" MARINE GRADE ALUMINUM
- MULTIPLE TIE-DOWN LOCATIONS

SIDE RACK

- 2X "IT-FITS"™ MOUNTING BASES
- "IT-FITS"™ ROTOPAX/FUELPAX MOUNT
- "IT-FITS"™ UNIVERSAL TOOL MOUNT

EXTRAS

- MADE IN THE USA
- SPEED MOUNT SYSTEM
- FAST INSTALL PLUG
- NO DRILLING REQUIRED
- CAN BE INSTALLED USING ONLY BASIC HAND TOOLS
- ALL MOUNTING HARDWARE INCLUDED
- TILTS WITH THE BED OF THE GENERAL

GENERAL GP RACK



POLARIS GENERAL™ 1000 GP RACK™

POLARIS® 2 SEAT

FITS ALL MODELS OF

- 2016 - 2018 Polaris General™ 1000 EPS
- 2016 - 2018 Polaris General™ 4 1000 EPS
- 2016 - 2018 Polaris General™ 1000 EPS Deluxe
- 2016 - 2018 Polaris General™ 1000 EPS Ride Command Edition
- 2016 - 2018 Polaris General™ 1000 EPS Premium
- 2016 - 2018 PolarisGeneral™ 1000 EPS Hunter Edition
- 2019 Polaris General™ 1000 EPS Hunter Edition Polaris Pursuit Camo
- 2019 Polaris General™ 4 1000 Matte White Metallic
- 2019 Polaris General™ 1000 Ride Command Edition Black Pearl
- 2019 Polaris General™ 1000 White Lighting
- 2019 Polaris General™ 1000 Premium Havasu Red Pearl
- 2019 Polaris General™ 4 1000 Ride Command Edition Black Pearl.
- 2019 Polaris General™ 1000 Limited Edition Cruiser Black Breakout Camo
- 2019 Polaris General™ 1000 Deluxe Orange Rust
- 2019 Polaris General™ 1000 Deluxe Titanium Metallic



**MADE IN
USA**



PART #	MSRP	FINISH
RB05088	\$727.99	Black 

(208) 696-7230

Prices are subject to change



TILTABLE WITH BED

WE DESIGNED THE RANGER RACK TO TILT WITH THE BED OF THE UTV ITSELF! WHILE KEEPING ALL OF YOUR GEAR SECURE AT THE SAME TIME!



16X "IT-FITS"™ MOUNTING LOCATIONS!

WITH 16 "IT-FITS"™ MOUNTING LOCATIONS AVAILABLE TO USE ON THE RACK, YOU HAVE ALMOST LIMITLESS CARRYING POSSIBILITIES



BUILT FOR UTILITY

OUR RANGER RACK WAS BUILT FOR UTILITY, CARRY THE SUPPLIES YOU NEED FOR ANY JOB!

DESIGN

- MADE WITH 1.5" DIAMETER STEEL TUBING
- HEAVY DUTY CONSTRUCTION FOR DURABILITY
- POWDER COATED



TRAY

- 1/8" MARINE GRADE ALUMINUM
- MULTIPLE TIE-DOWN LOCATIONS
- 2X 2-SIDED "IT-FITS"™ MOUNTING BASES

EXTRAS

- MADE IN THE USA
- EASY INSTALL
- NO DRILLING REQUIRED
- CAN BE INSTALLED USING ONLY BASIC HAND TOOLS
- ALL MOUNTING HARDWARE INCLUDED
- TILTS WITH THE BED OF YOUR RANGER!

SIDE RACK

- 6X 2-SIDED "IT-FITS"™ MOUNTING BASES
- "IT-FITS"™ ROTOPAX/FUELPAX MOUNT
- "IT-FITS"™ UNIVERSAL TOOL MOUNT
- "IT-FITS"™ RANGER SPARE TIRE MOUNT

RANGER

UTILITY CARGO RACK



POLARIS RANGER™ UTILITY CARGO RACK™

POLARIS® 2 & 4 SEAT

FITS ALL MODELS OF

- 2015 to 2019 Polaris Ranger® 570 Full Size
- 2015 to 2019 Polaris Ranger® Crew® 570-6
- 2015 to 2019 Polaris Ranger® Crew® 570-4
- 2015 to 2019 Polaris Ranger® Crew® 570-6
- 2015 to 2019 Polaris Ranger® XP® 900
- 2015 to 2019 Polaris Ranger® Crew® XP 900
- 2015 to 2019 Polaris Ranger® XP® 1000 EPS
- 2015 to 2019 Polaris Ranger® XP® 1000 EPS Premium
- 2015 to 2019 Polaris Ranger® XP® 1000 EPS High Lifter Edition
- 2015 to 2019 Polaris Ranger® XP® 1000 EPS North Star Edition
- 2015 to 2019 Polaris Ranger® Crew® XP® 1000 EPS
- 2018 Polaris Ranger® Crew® XP® 1000 20TH Anniversary Edition
- 2015 to 2019 Polaris Ranger® Crew® XP® 1000 EPS North Star HVAC Edition
- 2015 to 2019 Polaris Ranger® Crew® XP® 1000 EPS High Lifter Edition



**MADE IN
USA**



PART #	MSRP	FINISH
RB05145	\$935.99	Black 

(208) 696-7230

Prices are subject to change

ROOF & AIR FOIL

AIRFOIL

- 1/8" MARINE GRADE ALUMINUM
- DEFLECTS AIR INTO BED
- ONLY ADDS 2" OF HEIGHT TO UTV

EXTRAS

- MADE IN THE USA
- EASY INSTALL
- NO DRILLING REQUIRED
- CAN BE INSTALLED USING ONLY BASIC HAND TOOLS
- ALL MOUNTING HARDWARE INCLUDED

ROOF

- 1/8" MARINE GRADE ALUMINUM
- HIGH STRENGTH DESIGN
- RBO CLAMP SYSTEM ALLOWS FOR EASY INSTALL
- FITS WITH STOCK POLARIS VISOR
- TOUGH POWDER COATED FINISH



POLARIS RZR® ROOF by RBO™

When it comes to our RZR® roof there is more than meets the eye. First off, we used 1/8" thick aluminum alloy that is not only lightweight, but is extremely strong and durable.

To add even more strength, we formed this roof with internal strengthen ribs along the sides.

POLARIS® RZR 900 / 1000

FITS ALL MODELS OF

- 2014 Polaris RZR® 900
- 2014 Polaris RZR® 900XP®
- 2014 - 2019 Polaris RZR® XP® 1000
- 2015 - 2019 Polaris RZR® 900
- 2015 - 2018 Polaris RZR® 900 Trail
- 2015 - 2019 Polaris RZR® S 900
- 2015 - 2018 Polaris RZR® 1000
- 2015 - 2019 Polaris RZR® S 1000
- 2015 - 2019 Polaris RZR® XP® Turbo Dynamix Edition
- 2015 - 2019 Polaris RZR® XP® 1000 Trails and Rocks Edition
- 2015 - 2019 Polaris RZR® XP® Turbo
- 2015 - 2018 Polaris RZR® 1000 Highlifter Edition
- 2015 - 2018 Polaris RZR® 4 900
- 2015 - 2018 Polaris RZR® Turbo Fox Edition
- 2015 - 2018 Polaris RZR® 4 1000
- 2015 - 2018 Polaris RZR® XP® 4 Turbo Dynamix Edition
- 2015 - 2019 Polaris RZR® 4 1000 Highlifter Edition
- 2015 - 2019 Polaris RZR® XP® 1000 Ride Command
- 2019 Polaris RZR® XP® Turbo LE
- 2019 Polaris RZR® XP® 1000 EPS Dynamics
- 2019 Polaris RZR® XP® Dynamics Edition

PART #	MSRP	FINISH
RB08000	\$459.00	Black 



PART #	MSRP	FINISH
RB08002	\$207.99	Black 

(208) 696-7230

Prices are subject to change

FRONT-FOLDING WINDSHIELD

DESIGN

- POWDER COATED
- STAINLESS STEEL HINGES
- FULLY FUNCTIONAL CNC MILLED VENTS
- MANUAL WINDSHIELD WIPER



REAL GLASS

- DOT APPROVED 1/4" LAMINATED GLASS
- COMPLETELY SCRATCH RESISTANT
- KEEPS DUST OUT OF CAB

EXTRAS

- MADE IN THE USA
- EASY INSTALLATION
- ALL MOUNTING HARDWARE INCLUDED

MANUALLY OPERATED WINDSHIELD WIPER

VISIBILITY IS ALWAYS EASY TO MAINTAIN WITH OUR WINDSHIELD WIPER. EASILY CLEAR ANY OBSTRUCTION

RUBBER LATCH WINDSHIELD HOLD-DOWN SYSTEM

THE RUBBER LATCH SYSTEM WE MADE FOR OUR WINDSHIELDS KEEPS THEM SECURE WHEN FOLDED DOWN, NO MATTER HOW HARSH THE TERRAIN!

EASILY FOLDABLE

WE DESIGNED OUR WINDSHIELD TO BE EASIER THAN EVER TO FOLD DOWN, AND WITH OUR EXCLUSIVE HINGES, THE ACTION IS BUTTERY SMOOTH EVERY TIME.

FULLY FUNCTIONAL CNC MACHINED VENTS

EVER NEED A LITTLE EXTRA VENTILATION WHEN YOU HAVE YOUR WINDSHIELD UP? WELL SO DID WE, SO WE DESIGNED CUSTOM CNC MACHINED VENTS THAT ARE EASILY ACCESSIBLE WHILE YOU'RE ON THE ROAD!

ULTIMATE VISIBILITY

IF YOU'RE OUT ON A TRAIL AND WANT TO ENJOY THE RUSH OF THE AIR IN YOUR FACE, FOLD OUR WINDSHIELD DOWN, AND INSTANTLY ENHANCE YOUR EXPERIENCE AND VISIBILITY!

EASY INSTALLATION

WITH ALL THE HARDWARE REQUIRED FOR INSTALLATION INCLUDED, YOU'LL BE OUT N' RIPPING UP TRAILS IN NO TIME!

(208) 696-7230

Prices are subject to change



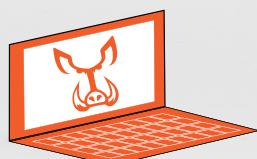
POLARIS RZR® 900/1000 FOLDING FRONT WINDSHIELD



RZR 900 / 1000

FITS ALL MODELS OF

- 2014 Polaris RZR® 900
- 2014 Polaris RZR® 900 XP®
- 2014 - 2018 Polaris RZR® XP® 1000
- 2015 - 2019 Polaris RZR® 900
- 2015 - 2018 Polaris RZR® 900 Trail
- 2015 - 2019 Polaris RZR® S 900
- 2015 - 2018 Polaris RZR® 1000
- 2015 - 2019 Polaris RZR® S 1000
- 2015 - 2018 Polaris RZR® XP® Turbo Dynamix Edition
- 2015 - 2018 Polaris RZR® XP® 1000 Trails and Rocks Edition
- 2015 - 2018 Polaris RZR® 1000 Turbo
- 2015 - 2018 Polaris RZR® 1000 Highlifter Edition
- 2015 - 2018 Polaris RZR® 4 900
- 2015 - 2018 Polaris RZR® Turbo Fox Edition
- 2015 - 2018 Polaris RZR® 4 1000
- 2015 - 2018 Polaris RZR® XP® 4 Turbo Dynamix Edition
- 2015 - 2018 Polaris RZR® 4 1000 Highlifter Edition
- 2015-2018 Polaris RZR® 900 XC





**POLARIS RZR® 900/1000
WITH VENTS AND WIPER**

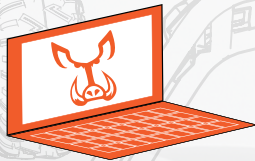
PART #	MSRP	FINISH
RB04000	\$659.99	Black 



MADE IN
USA



2019-CURRENT POLARIS RZR® 1000 FOLDING FRONT WINDSHIELD with wiper and vents



 **POLARIS®**
RZR 1000

FITS ALL MODELS OF

- 2019 - Current Polaris RZR® XP® 1000
- 2019 - Current Polaris RZR® XP® Turbo
- 2019 - Current Polaris RZR® XP® 4 1000
- 2019 - Current Polaris RZR® XP® 4 1 Turbo
- 2019 - Current Polaris RZR® 1000 Trails & Rocks
- 2019 - Current Polaris RZR® XP® 1000 High Lifter
- 2019 - Current Polaris RZR XP 4 High Lifter

PART #	MSRP	FINISH
RB04065	\$659.99	Black 





2019-CURRENT POLARIS RZR® XP® TURBO S

FOLDING FRONT WINDSHIELD

with wiper and vents

 **POLARIS®**
RZR XP TURBO S

FITS ALL MODELS OF

- 2019 - Current Polaris RZR® XP® Turbo S

PART #	MSRP	FINISH
RB04084	\$699.99	Black 



(208) 696-7230

Prices are subject to change



POLARIS RZR® 570/800 FOLDING FRONT WINDSHIELD

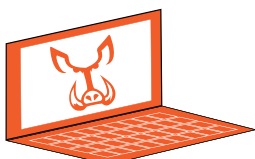


 **POLARIS®**
RZR 570 / 800

Fits all Models of

- 2012-2019 RZR® 570
- 2012-2019 RZR® 570 EPS
- 2012-2014 RZR® 800

PART #	MSRP	FINISH
RB04050	\$629.99	Black 



REAR SLIDING WINDOW

REAL GLASS

- DOT APPROVED TEMPERED GLASS
- COMPLETELY SCRATCH RESISTANT
- KEEPS DUST OUT OF CAB



DESIGN

- POWDER COATED
- DUAL SLIDING REAR GLASS WINDOWS
- COMPATIBLE WITH ALMOST ALL HARNESS TYPES

EXTRAS

- MADE IN THE USA
- EASY INSTALLATION
- ALL MOUNTING HARDWARE INCLUDED

(208) 696-7230

Prices are subject to change



POLARIS RZR® 1000 REAR SLIDING WINDOW (DUST ELIMINATOR)

If you are tired of Dust getting into your Side X Side. Take a look at the RBO Dust Eliminating Rear Sliding Window. We have the best sealing window in the industry that will significantly reduce dust inside your Side x Side UTV cab. Like our front windshield, our rear sliding window has one of the industry's largest window.



FITS ALL MODELS OF

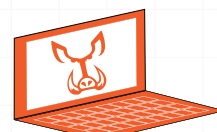
- 2014 to 2018 RZR® XP® 1000
- 2015 to 2018 RZR® XP® Turbo 1000
- 2015 to 2018 RZR® XP® Turbo Fox Edition
- 2015 to 2018 RZR® XP® Turbo Dynamix Edition
- 2015 to 2018 RZR® XP® 1000 Trails and Rocks Edition
- 2015 to 2018 RZR® XP® 4
- 2014 to 2018 RZR® XP® 4 1000
- 2015 to 2018 RZR® XP® 4 Turbo
- 2015 to 2018 RZR® XP® 4 Turbo Fox Edition
- 2015 to 2018 RZR® XP® 4 Turbo Dynamix Edition

POLARIS RZR® 1000 REAR SLIDING WINDOW (DUST ELIMINATOR)		
PART #	MSRP	FINISH
RB04038	\$623.99	Black 



Add this option if you have Polaris Click 6 Harness

CLICK 6 RETRACTABLE HARNESS COVER		
RB04045	\$93.59	Black 





POLARIS RZR® 900 REAR SLIDING WINDOW

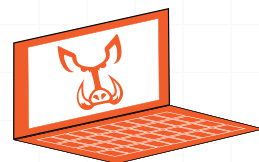


POLARIS® **RZR 900**

FITS ALL MODELS OF

- 2015 - 2019 Polaris RZR® 900
- 2015 - 2018 Polaris RZR® 900 Trail
- 2015 - 2018 Polaris RZR® S 900
- 2015 - 2019 Polaris RZR® S 1000
- 2015-2018 Polaris RZR® 900 XC

The sliding window gives you the option to open the rear panel and allow air into the cab as well as an access point to the cargo box. We included a storage tray that sits behind your seats for additional storage.




PART #	MSRP	FINISH
RB04024	\$499.99	Black

(208) 696-7230

Prices are subject to change

ACCESSORIES



IT DOESN'T MATTER IF YOU'RE OUT ON THE TRAILS, OR WORKING ON THE JOB SITE, RBO ACCESSORIES HAVE YOUR BACK! FROM OUR BROAD OFFERING OF "IT-FITS"™ ACCESSORIES, TO HEAT SHIELDS THAT KEEP YOUR PETS AND COOLERS COLDER, TO A COMBO GUN RACK - GRAB HANDLE- LUG WRENCH, YOU'LL ALWAYS HAVE THE TOOLS YOU NEED TO TAKE YOUR UTV EXPERIENCE TO NEW HEIGHTS!



"IT-FITS"™
ROTOPAX / FUELPAX MOUNTS



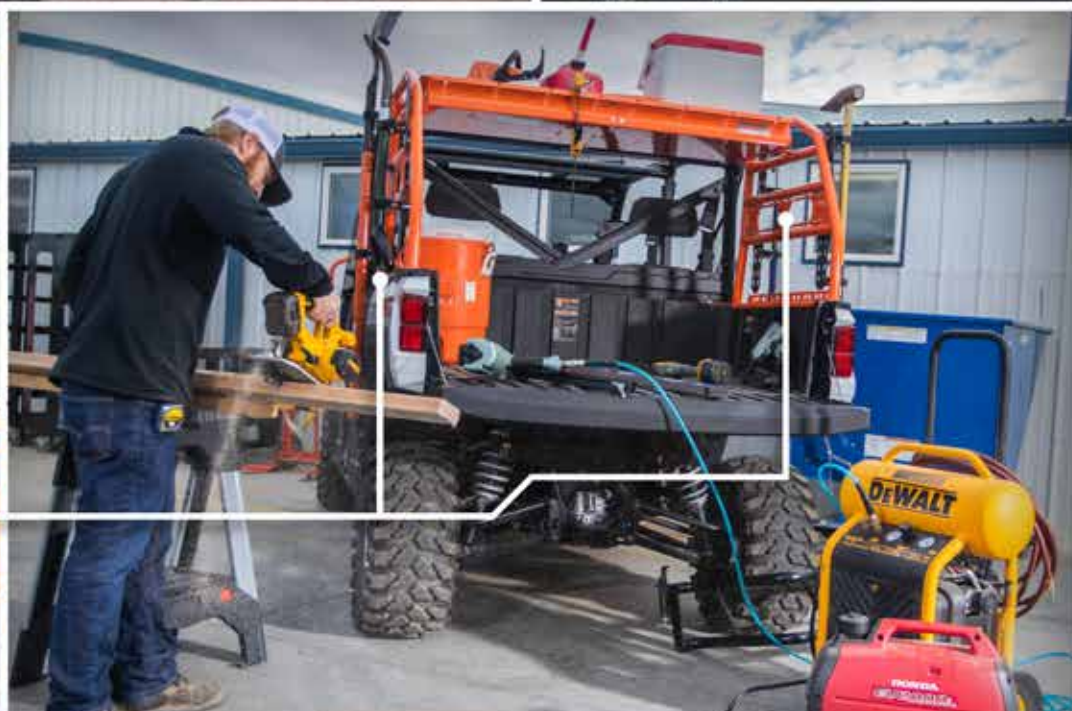
"IT-FITS"™
SPARE TIRE MOUNTS



RUFF RIDER
HEAT SHIELDS



"IT-FITS"™
UNIVERSAL TOOL MOUNTS



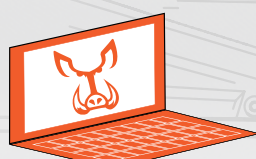
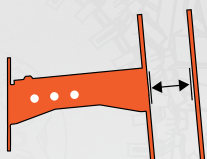


RBO™ “IT FITS”™ ADJUSTABLE SPARE TIRE MOUNT

The RBO™ “It Fits”™ Adjustable Spare Tire Mount for your UTV is a true industry first. With our sliding mount you can easily adjust this mount to accommodate different sized tires and wheel offsets. Not only did we design this mount to work with 10mm and 12mm wheel lugs we also include all of the mounting hardware.



MADE IN
USA



PART #	MSRP	FINISH
RB01018	\$135.19	Black

(208) 696-7230

Prices are subject to change



CFMOTO ZFORCE SPARE TIRE MOUNT™

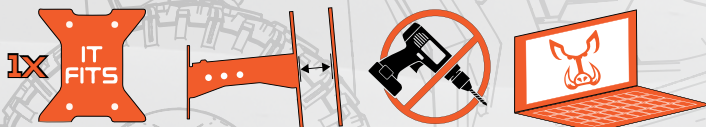
We designed this spare tire mount to be used with all CFMOTO® ZFORCE® Side x Sides made from 2015 to 2018. It features our “It Fits”™ adjustable tire mount so you can choose the length of standoff you want depending on your tire size.

The ZFORCE® Spare Tire Mount also serves as a rear bumper. Our ZFORCE® Spare Tire Mount is easy to install and should only take about 15 minutes to install using basic tools.



FITS ALL MODELS OF

- 2015 - 2019 CFMOTO® ZFORCE® 1000
- 2015 - 2019 CFMOTO® ZFORCE® 800 EX
- 2015 - 2019 CFMOTO® ZFORCE® 800 Trail
- 2015 - 2019 CFMOTO® ZFORCE® 500 Trail



PART #	MSRP	FINISH
RB03006	\$395.19	Black

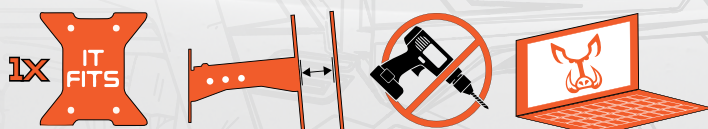
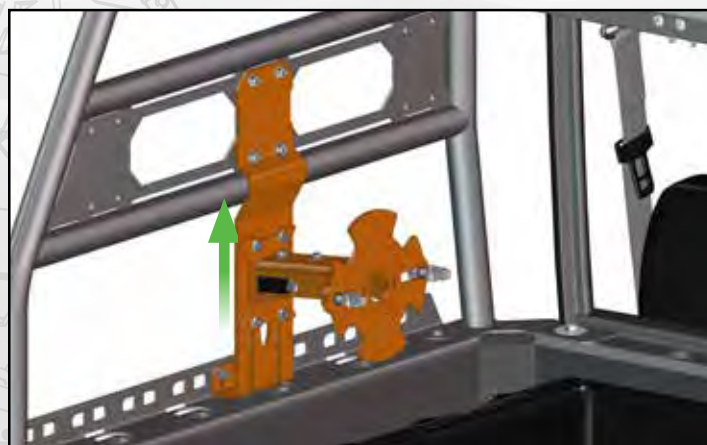
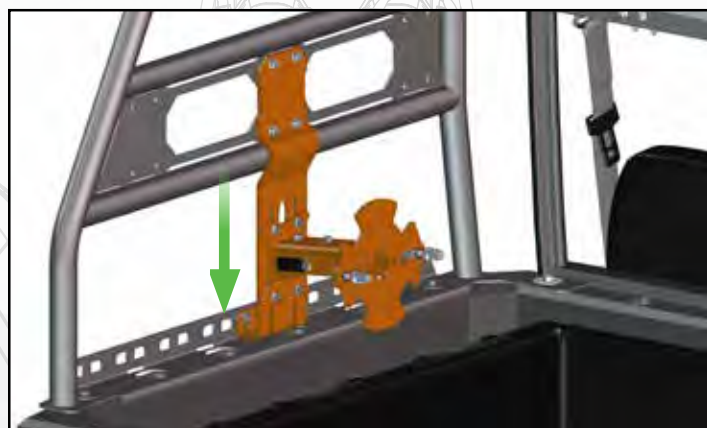


POLARIS RANGER™ SPARE TIRE MOUNT™

The Ranger® Spare Tire Mount was designed to fit perfectly on the Ranger® Utility Cargo Rack (RB05145). It can be installed quickly with included hardware without modifying your utility rack.

It features our “It Fits”™ adjustable tire mount so you can choose the length of the standoff of the tire. The “It Fits”™ adjustable tire mount also installs on slots so you can adjust the height. This feature will accommodate the spare tire’s height and allow it to rest in the bed of the Polaris Ranger®. The “It Fits”™ adjustable tire mount comes with both 10mm and 12mm wheel lugs.

Constructed from strong 3/16” steel, it will give you years of use.



PART #	MSRP	FINISH
RB01074	\$187.19	Black 

(208) 696-7230

Prices are subject to change



RBO™ "IT FITS"™ UNIVERSAL TOOL MOUNT

The "It Fits"™ Universal Tool mount is the perfect way to secure tools and equipment to your Vehicle. While it was primarily designed to bolt directly to any of our RBO Racks with the "It Fits"™ Mount. You could bolt this mount to any flat surface you can think of.

When it comes to versatility, the RBO "It Fits"™ Universal Tool Mount is the perfect mount for your Polaris, Can-Am, John Deere, Textron, Yamaha, Cub Cadet or Mahindra Side x Side.

You can install our Universal Tool Mount in a vertical or horizontal position, you can use the mount on its own or with another to create multiple tool holding options. The uses of this bracket are only limited to your own imagination.



PART #	MSRP	FINISH
RB01070	\$93.59	Black



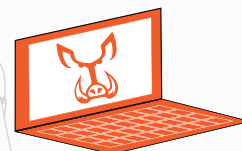
RBO™ "IT FITS"™ ROTOPAX™ MOUNT

The RBO "It Fits" Rotopax™ Mount has all of the adjustability you want and need out of a fuel mount. Not only can you adjust the depth to get a compact fit to your machine, but the Rotopax™ can be rotated a variety of angles making it one of the most versatile fuel mounts in the industry.



VIDEO
ONLINE

MADE IN
USA



PART #	MSRP	FINISH
RB01008	\$83.19	Black 



Have you ever been out and needed extra fuel? Are your current fuel cans leaking? It doesn't matter what you have. Jeep, Nissan, Yamaha, side by side, ATV, UTV, snow sled, motorcycle, trailer, Honda, Polaris, RZR... No matter what you drive, and if it needs fuel- the RotopaX FuelpaX should be the first fuel pack you think of. RotopaX FuelpaX are the newest in the line of RotopaX gas cans, and have the same tried and true quality and durability as a regular RotopaX, and are even compatible with the same mounts you use for the RotopaX.

The size of the 1.5 Gallon pack is 14" x 14" x 3.5"
The size of the 2.5 Gallon pack is 20" x 14" x 3.5"
The size of the 3.5 Gallon pack is 21.25" x 14" x 4.5"



PART #	DESCRIPTION	MSRP
FX-1.5	1.5 Gallon FuelpaX	\$59.99
FX-2.5	2.5 Gallon FuelpaX	\$69.99
FX-3.5	3.5 Gallon FuelpaX	\$79.99

(208) 696-7230

Prices are subject to change



POLARIS RZR® ULTIMATE GUN RACK/ GRAB HANDLE/LUG WRENCH™



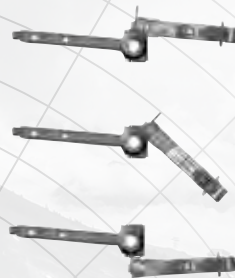
We designed our Ultimate Gun Rack with Lots of adjustability so you can change the gun mount locations to fit your specific rifle or shotgun.

We incorporated Pro Taper® Hand Grips, and a machined in a 1/2" drive socket adapter into the end of the mounting shaft. This allows you to use our Ultimate Gun Rack™ as a Lug Wrench for removing your Side x Side lug nuts (Socket Not Included).

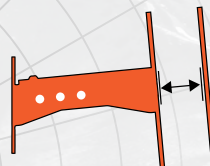


Multi-Position Mounts

SIDE VIEW



TOP VIEW



PART #	MSRP	FINISH
RB01000	\$207.99	Black



CFMOTO® ZFORCE ROCK SLIDER

The CFMOTO® Community has been reaching out to us asking for a high quality UTV Rock Slider to Fit the CF Moto ZForce Series of Side x Sides. After talking to riders in Moab and several CF distributors we went to work on a design. The result is a Rock Slider / Nerf Bar that is designed specifically for the CFMOTO® ZForce Series UTV's. These RBO CFMOTO® Rock Sliders are built right here in Idaho by us. We make them using steel tubing and fabricated steel mounting brackets. After welding them up, we powder coat them in a black finish and include all of the mounting hardware. Installation is very easy and should take you about 15 minutes using basic hand tools.



FITS ALL MODELS OF

- 2015 - 2019 CFMOTO® ZFORCE® 1000
- 2015 - 2019 CFMOTO® ZFORCE® 800 EX
- 2015 - 2019 CFMOTO® ZFORCE® 800 Trail
- 2015 - 2019 CFMOTO® ZFORCE® 500 Trail



PART #	MSRP	FINISH
RB03000	\$239.19	Black 

(208) 696-7230

Prices are subject to change

RUFF RIDER

HEAT SHIELD

KEEP YOUR PETS COOL & YOUR COOLERS COLDER!

2 Years ago, we started trying to figure out a way to reduce the extreme heat generated in the in the bed of our side x sides. Many machines generate so much heat that it would be unbearable to a dog. We worked hard to find a solution, and after 2 years of development and testing we are proud to offer our Ruff Rider Heat Shield.

We designed our Ruff Ride Heat Shield to not only keep pets cool and comfy we also designed it to help keep your cooler colder.

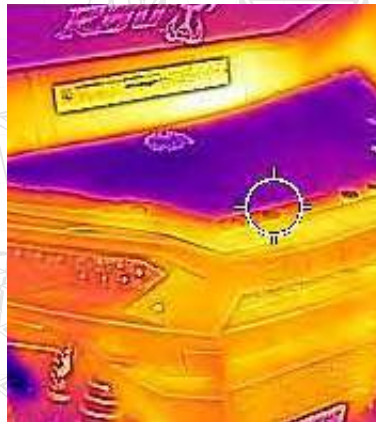
Did you know that UTV beds can reach temperatures of over 140 degrees? To keep that heat down, we used Military Grade Heat Deflection material on the bottom of the Dog Pad and then sew a mildew resistant Foam Padding inside then cover it with Cordura® Fabric that is mildew resistant, rip tear, and abrasion resistant.



BED OF SIDE X SIDE
THERMAL IMAGING
BEFORE AFTER



140° F WITHOUT PAD



80° F WITH PAD



FIBERGLASS IMPREGNATED HEAT RESISTANT SILICONE
REDUCES HEAT UP TO 100° F!

**PADDED
FOR YOUR
PET**



WE MAKE HEATSHIELDS FOR:



FITS ALL MODELS OF

- 2015 to 2018 RZR® XP 1000
- 2015 to 2018 RZR® XP Turbo 1000
- 2015 to 2018 RZR® XP 1000 Trails and Rocks Edition
- 2015 to 2018 RZR® 4 1000
- 2015 to 2018 RZR® 4 Turbo
- 2018 to 2019 RZR® Turbo S

PART #	MSRP
RB01060	\$99.99

FITS ALL MODELS OF

- 2016 to 2018 General 1000 EPS
- 2016 to 2018 General 4 1000 EPS
- 2016 to 2018 General 1000 EPS Deluxe
- 2019 General 1000 EPS
- 2019 General 4 1000
- 2019 General 1000 Deluxe

PART #	MSRP
RB01068	\$99.99

FITS ALL MODELS OF

- 2015 to 2018 RZR® 900
- 2015 to 2018 RZR® 900 Trail
- 2015 to 2018 RZR® 900 EPS
- 2015 to 2018 RZR® 900 EPS XC
- 2015 to 2018 RZR® 900 900-S
- 2016 to 2109 RZR® 4 900 - 4 Seat

PART #	MSRP
RB01059	\$119.99



FITS ALL MODELS OF

- 2015 to 2018 CFMOTO® ZFORCE 1000
- 2015 to 2018 CFMOTO® ZFORCE 800 EX
- 2015 to 2018 CFMOTO® ZFORCE 800 Trail
- 2015 to 2018 CFMOTO® ZFORCE 500 Trail

PART #	MSRP
RB01061	\$99.99



FITS ALL MODELS OF

- 2018 to 2019 Maverick Trail
- 2018 to 2019 Maverick Trail DPS
- 2019 Maverick Sport
- 2019 Maverick Sport DPS
- 2019 Maverick Sport X RC
- 2019 Maverick Sport X MR
- 2019 Maverick Sport Max DPS

PART #	MSRP
RB01067	\$99.99

MORE MODELS ONLINE!

(208) 696-7230

Prices are subject to change

RBO™ HOODIES



RB07026

\$19.99
+TAX

AVAILABLE IN S, M, L, XL, 2XL

RBO™ T-SHIRTS



RB07027

\$14.99
+TAX

AVAILABLE IN S, M, L, XL, 2XL

RBO™ SNAPBACK HATS

TWO STYLES, TWO COLORS



PART #	DESCRIPTION	MSRP
RB07022	Grey/White Snap Back Hat w/ Circle Logo	\$14.99
RB07023	Grey/White Back Hat w/ Circle Logo	\$14.99
RB07024	Grey/Orange Snap Back Hat w/ Rectangle Logo	\$14.99
RB07025	Grey/Orange Snap Back Hat w/ Rectangle Logo	\$14.99

**3190 INDUSTRIAL WAY
MOUNTAIN HOME, ID 83647
208-696-7230 | HOURS: M-F 8-5
SALES@RAZORBACKOFFROAD.COM
RAZORBACKOFFROAD.COM**

WE ACCEPT



RAZORBACKOFFROAD.COM



SHARE YOUR
ADVENTURE WITH US



RAZORBACKOFFROAD.COM

RB00104R6