



# OPERATIONS MANUAL



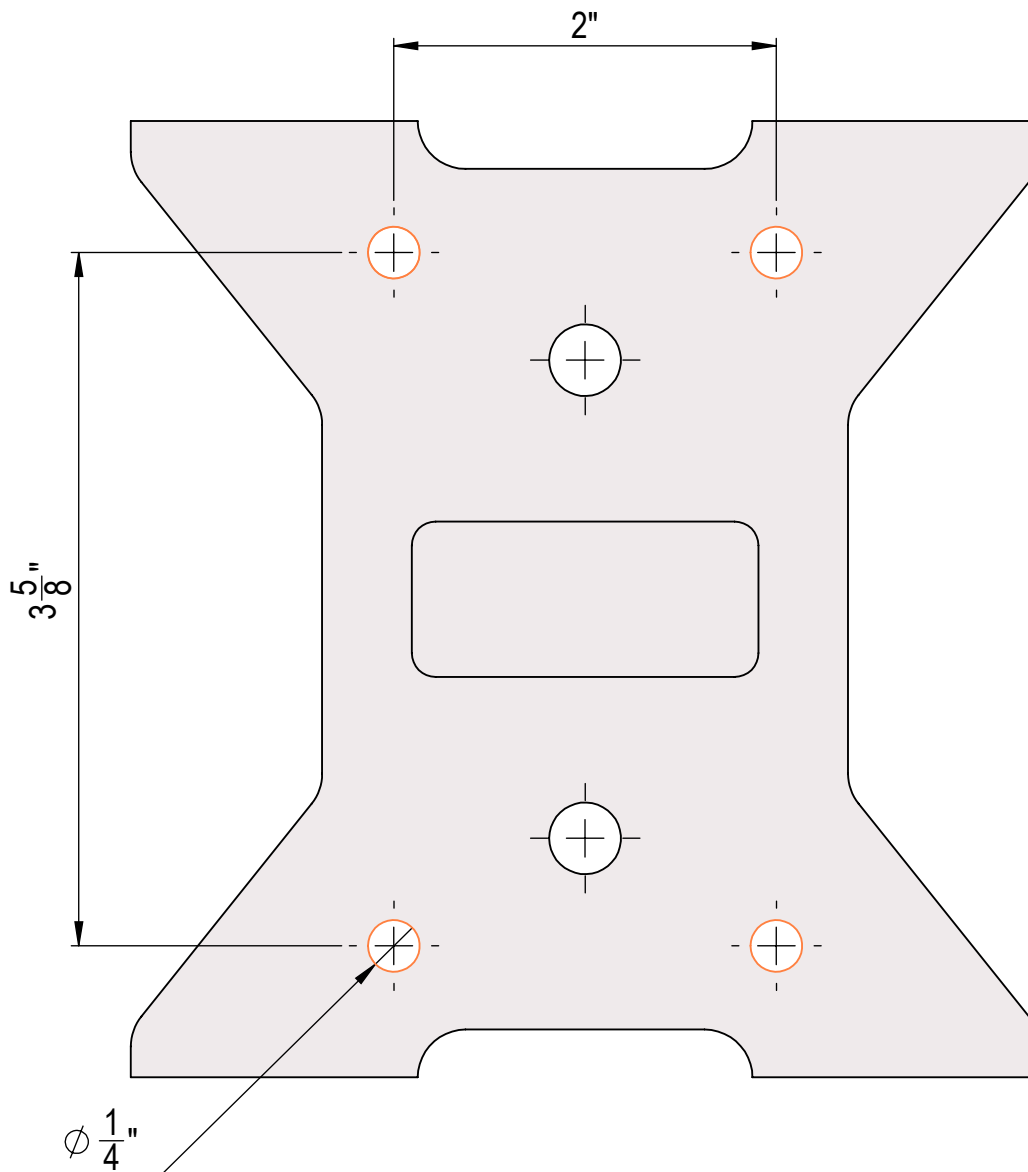
RBO<sup>TM</sup> ADJUSTABLE SPARE TIRE MOUNTS

## LIMITATION OF LIABILITY

Inventive Edge LLC total liability for any and all losses and damages arising out of any cause whatsoever shall in no event exceed the purchase price of the products or parts in respect of which such cause arises, whether such cause be based on theories of contract, negligence, strict liability, tort or otherwise. Inventive Edge LLC shall not be liable for incidental, consequential or punitive damages or other losses. Inventive Edge LLC shall not be liable for, and consumer assumes liability for, all personal injury and property damage connected with the handling, transportation, possession, installation, other use or resale of the product, whether used alone or in combination with any other product or material. If Inventive Edge LLC furnishes technical advice to consumer, whether or not at consumer's request, with respect to installation, application, or use of the product and/or its related parts, Inventive Edge LLC shall not be liable for such technical advice and buyer assumes all risks of such advice and the results thereof. NOTE: Some states do not allow the limitation or exclusion of incidental or consequential damages, so the above limitations or exclusions, wholly or partially, may not apply. The portions of this limited warranty and limitation of liability shall be considered severable and all portions that are not disallowed by applicable law shall remain in full force and effect.

## "It Fits™"™ MOUNTING SYSTEM

With the "It Fits™" mounting system you can quickly and easily install any RBO accessory with the "It Fits™" icon.



## RBO™ “IT FITS”™ ADJUSTABLE SPARE TIRE MOUNT

PART#	DESCRIPTION
RB01018	RBO “It Fits™”™ ADJUSTABLE SPARE TIRE MOUNT (MOUNTING HARDWARE INCLUDED)
RB01018-ORANGE	RBO “It Fits™”™ ADJUSTABLE SPARE TIRE MOUNT (RBO ORANGE) (MOUNTING HARDWARE INCLUDED)



The RBO “It Fits™” Adjustable Spare Tire Mount is a true industry first. With our sliding mount you can easily adjust this mount to accommodate different sized tires and wheel offsets. Not only did we design this mount to work with 10mm and 12mm wheel lugs we also include all of the mounting hardware.

When it comes to installation, this mount has our exclusive “It Fits™” base plate. Just look at any of our racks and if you see the It Fits Icon you will know this mount will bolt directly onto the rack.

### INCLUDED MOUNTING HARDWARE

- (2) - 3/8” O Rings
- (2) - 10mm Lug Nuts
- (2) - 12mm Lug Nuts
- (2) - 10mm Studs
- (2) - 12mm Studs
- (8) - 1/4” x 3/4” Hex Flange Bolt
- (8) - 1/4” Flange Nylock Nuts
- (2) - Nut Holders

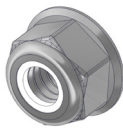
## Set up “It Fits™” Spare Tire Mount

- Assemble the “It Fits™” Spare Tire Mount loosely with

(1) - 1/4" x 3/4" Hex Flange Bolt



(1) - 1/4" Flange Nylock Nut



-Do not tighten fully, the mounting arm should be able to slide back and forth for adjustment in future steps

See Fig. 1-1 and Fig. 1-2

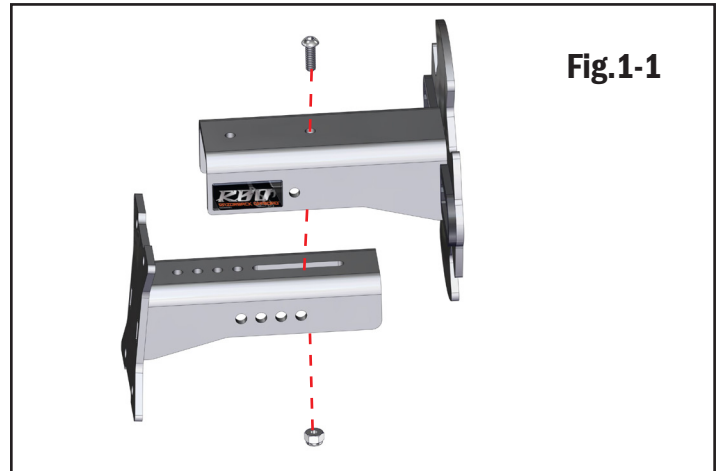


Fig.1-1



Fig.1-2

-Set the tire you wish to mount on a flat surface with the inner side facing down

-Measure from the flat surface to the bottom edge of the wheel's central bore. This is the minimum length you will need to have in order to mount your tire to your “IT FITS™” Adjustable Spare Tire Mount.

See Fig. 1-3

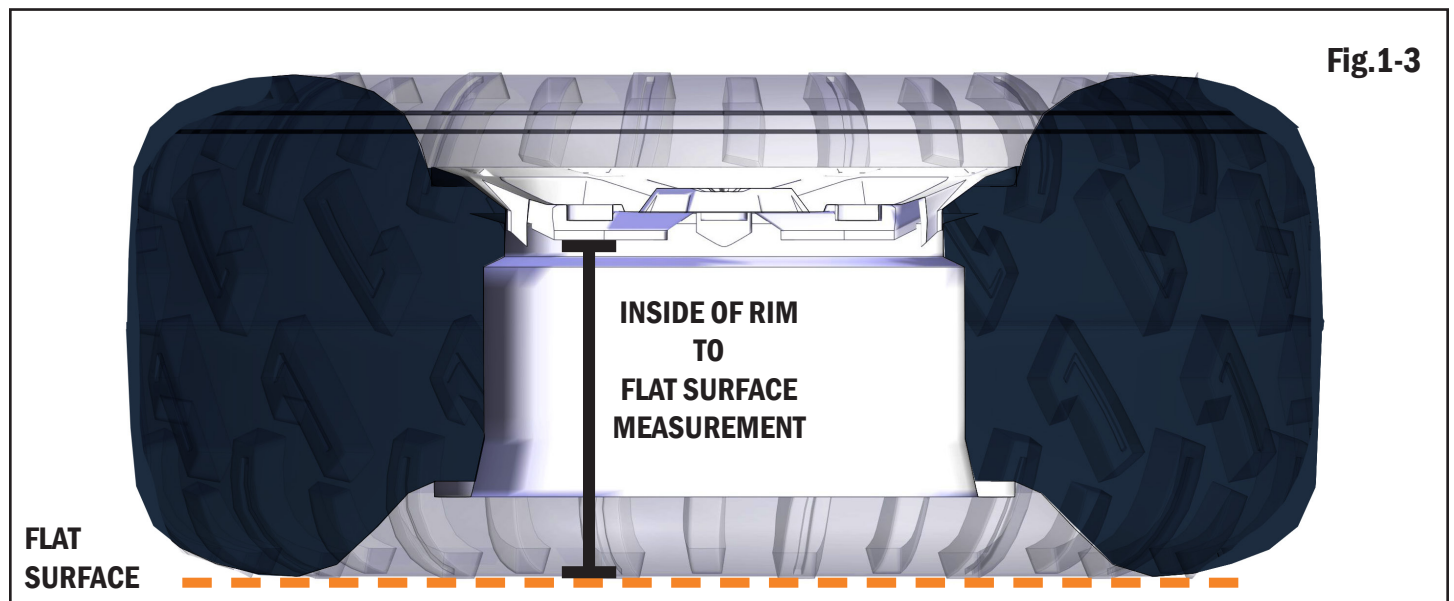


Fig.1-3



- Determine which mounting hole you want to use based on the measurement of the depth of your spare tire.

- Measure from the face of the “It Fits™” plate to the plate on which the tire will be mounted.

See Fig. 1-4

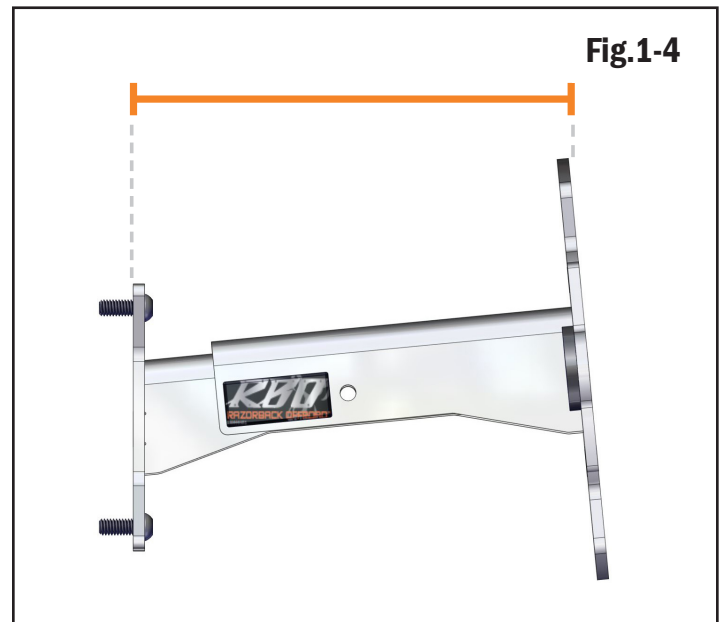


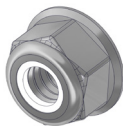
Fig.1-4

- Install with

(3) - 1/4" x 3/4" Hex Flange Bolt



(3) - 1/4" Flange Nylock Nuts



- Tighten all hardware

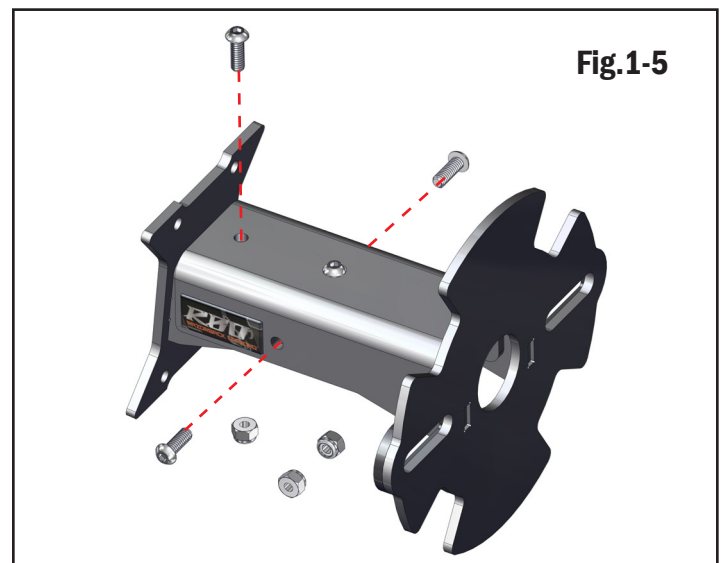


Fig.1-5

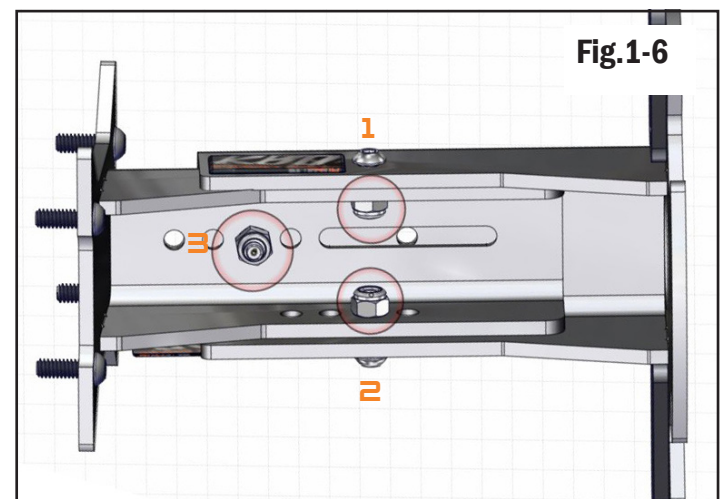


Fig.1-6

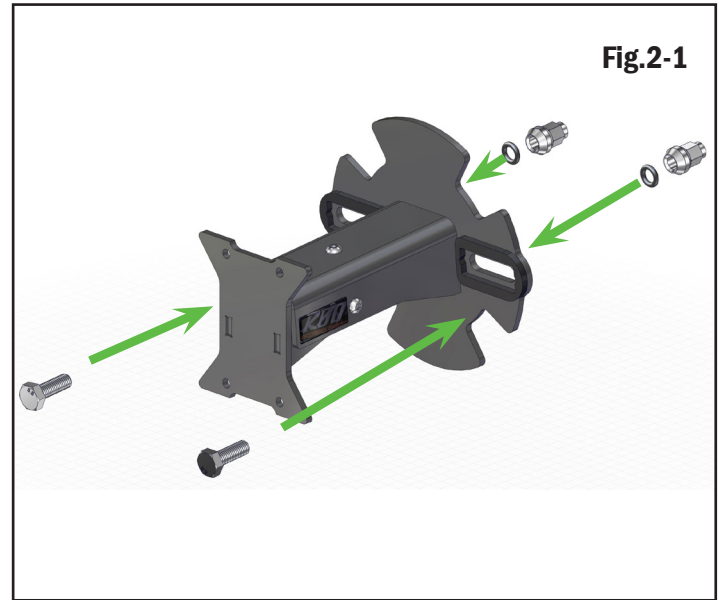
## Stud Installation

### Rims that require 12mm Lugs:

Insert the 12mm stud and rotate it so that it rests within the slot in the inner facing of the Tire Mount Plate.

Once the stud is in place/slip a single 3/8" O-ring over the stud's threads on the opposite side of the Tire Mount Plate and slide it down until it is touching the Tire Mount Plate. The 3/8" O-ring will then hold the stud in place within the slot preventing it from falling out, but still allow for the stud to be adjusted to fit multiple-Lug patterns, while mounting the tire to the machine.

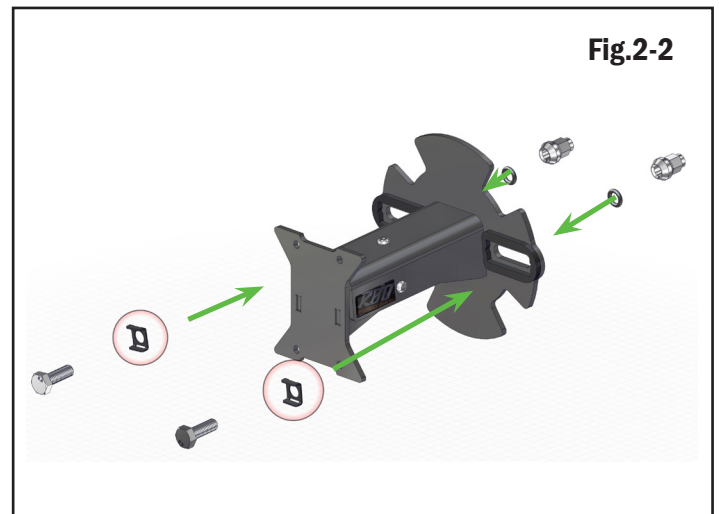
See Fig. 2-1



### Rims that require 10mm Lugs:

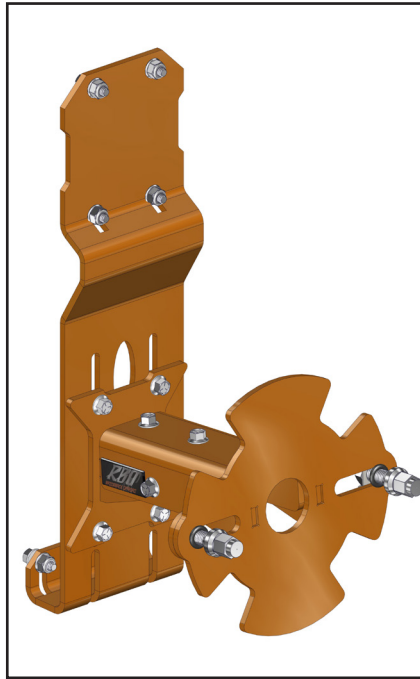
- Insert the 10mm stud into a Nut Holder.
- Insert both the stud and nut holder so that it rests within the slot facing towards the tire. It is important to note that you must have the bolt clips only when used together will the 10mm stud be prevented them from freely rotating when the stud is nested.

See Figure 2-2



## POLARIS RANGER™ SPARE TIRE MOUNT™

PART#	DESCRIPTION
RB01074	RANGER™ SPARE TIRE MOUNT™ (MOUNTING HARDWARE INCLUDED)
RB01074-ORANGE	RANGER® SPARE TIRE MOUNT™ (RBO ORANGE) (MOUNTING HARDWARE INCLUDED)



The Ranger Spare Tire Mount was designed to fit perfectly on the Ranger Utility Cargo Rack (RB05145). It can be installed quickly with included hardware without modifying your utility rack.

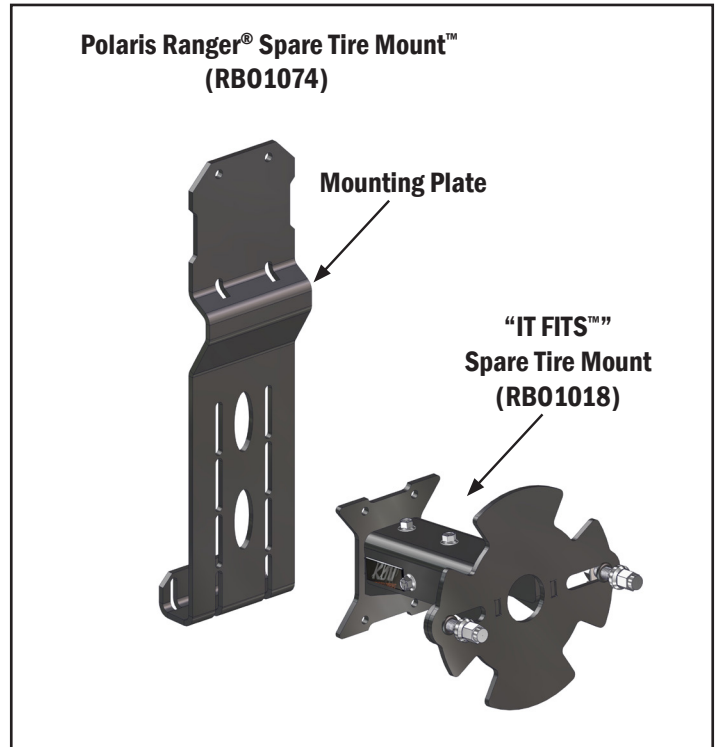
It features our “It Fits™” adjustable tire mount so you can choose the length of the standoff of the tire. The “It Fits™” adjustable tire mount also installs on slots so you can adjust the height. This feature will accommodate the spare tire’s height and allow it to rest in the bed of the Polaris Ranger™. The “It Fits™” adjustable tire mount comes with both 10mm and 12mm wheel lugs.

Constructed from strong 3/16” steel, it will give you years of use. Were so confident that you will love this product that we give it our 30-day money back guarantee\*

### INCLUDED MOUNTING HARDWARE

- (2) - 3/8” O Rings
- (2) - 10mm Lug Nuts
- (2) - 12mm Lug Nuts
- (2) - 10mm Studs
- (2) - 12mm Studs
- (14) - 1/4” x 3/4” Hex Flange Bolt
- (14) - 1/4” Flange Nylock Nuts
- (2) - Nut Holders

## Polaris Ranger Spare Tire Mount Installation



### Installation Instructions

#### Mounting Plate

-Install mounting plate on the inside of the RB0 Ranger Utility Rack

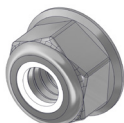
See Fig. 3-1 to 3-3

- Install with

(6) - 1/4" x 3/4" Hex Flange Bolt



(6) - 1/4" Flange Nylock Nuts



- Tighten all hardware

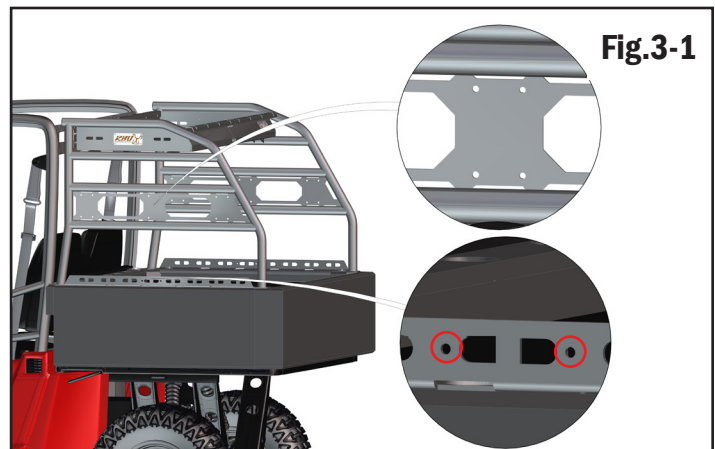


Fig.3-1

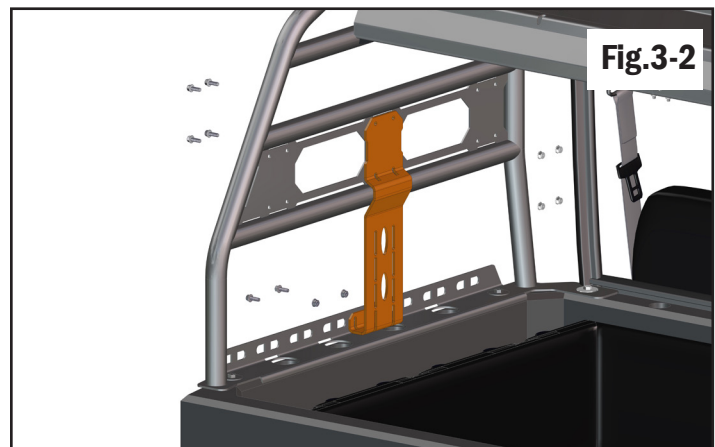
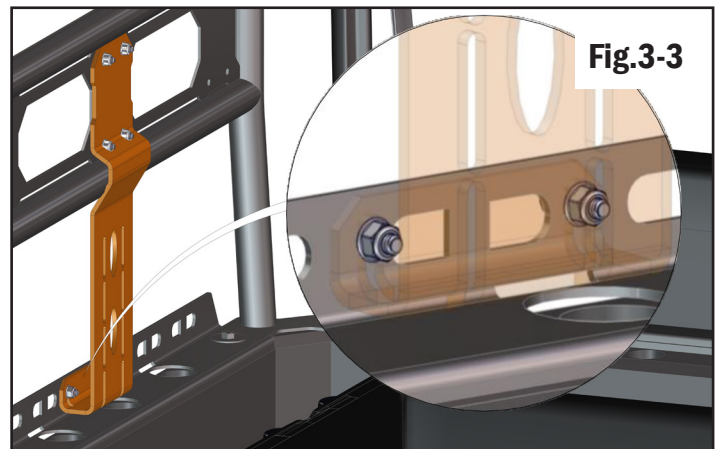


Fig.3-2





## Install “It Fits™”™ Spare Tire Mount

-Install “It Fits™”™ Spare Tire Mount on slots of the Mounting plate. Leave loose to adjust for your spare tire height

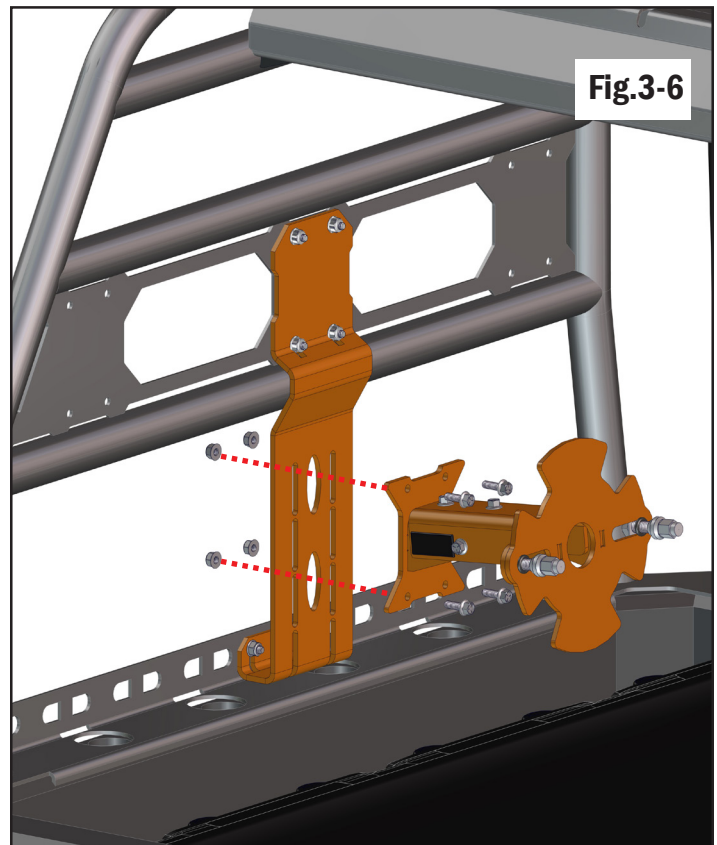
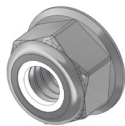
See Fig. 3-4 to 3-5

- Install with

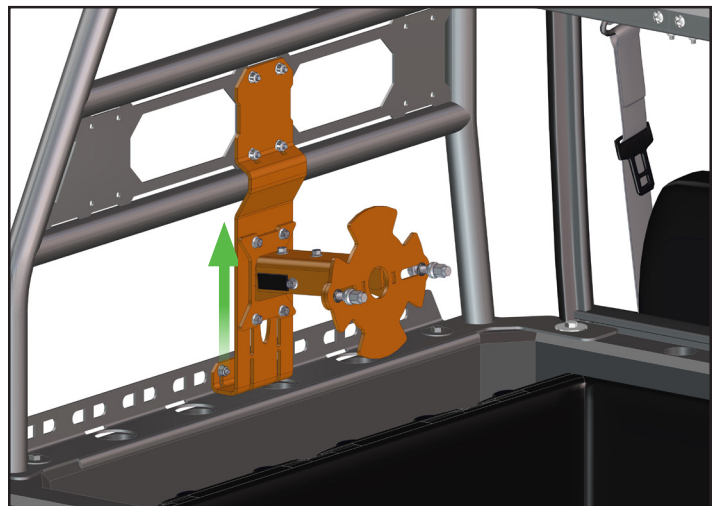
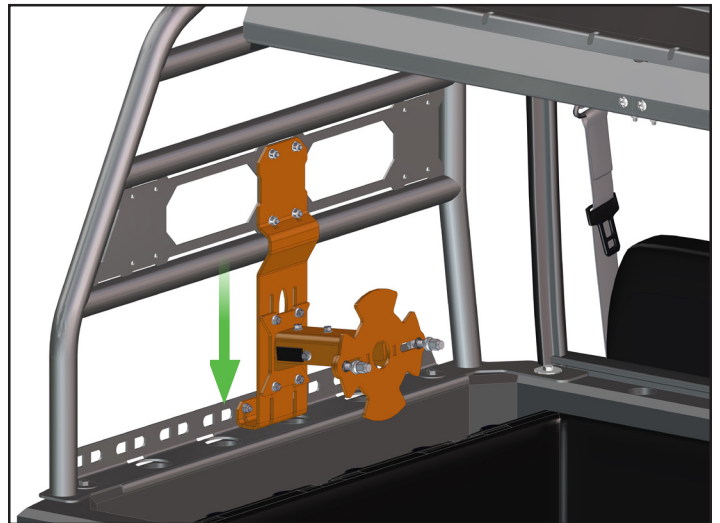
(4) - 1/4" x 3/4" Hex Flange Bolt



(4) - 1/4" Flange Nylock Nuts

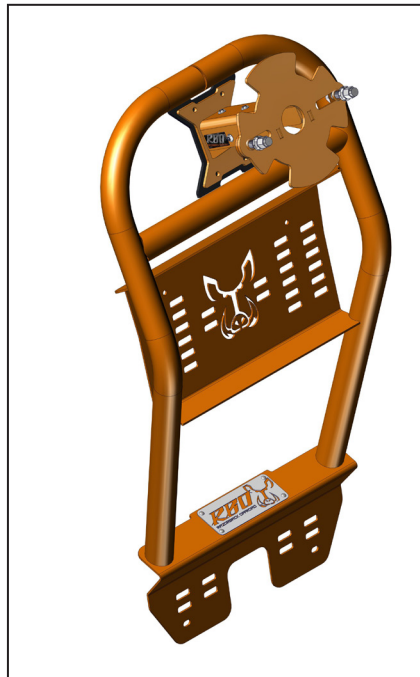


- With the “It Fits™”™ installed in the slots on the mounting plate gives it the ability to adjust for the size of your spare tire.
- Adjust it to the spare tire height and tighten all hardware
- Refer to pg’s 4-6 for “It Fits™” Spare Tire Mount set up



## CFMOTO ZFORCE SPARE TIRE MOUNT™

PART#	DESCRIPTION
RB03006	CFMOTO ZFORCE® Spare Tire Mount™ (MOUNTING HARDWARE INCLUDED)
RB03006-ORANGE	CFMOTO ZFORCE® Spare Tire Mount™ (RBO ORANGE) (MOUNTING HARDWARE INCLUDED)



We designed this spare tire mount to be used with all CFMOTO ZFORCE Side x Sides made from 2015 to 2018. It features our “It Fits™” adjustable tire mount so you can choose the length of standoff you want depending on your tire size. The ZFORCE Spare Tire Mount also serves as a rear bumper. Our ZFORCE Spare Tire Mount is easy to install and should only take about 15 minutes to install using basic tools. Made from 1-1/2” steel tubing this mount is designed for the long haul.

### CFMOTO® ZFORCE® Spare Tire Mount™ Fitment Chart

Year	Product Fitment
2015 - Present	CFMOTO® ZFORCE® 1000
2015 - Present	CFMOTO® ZFORCE® 800 EX
2015 - Present	CFMOTO® ZFORCE® 800 TRAIL
2015 - Present	CFMOTO® ZFORCE® 500 TRAIL

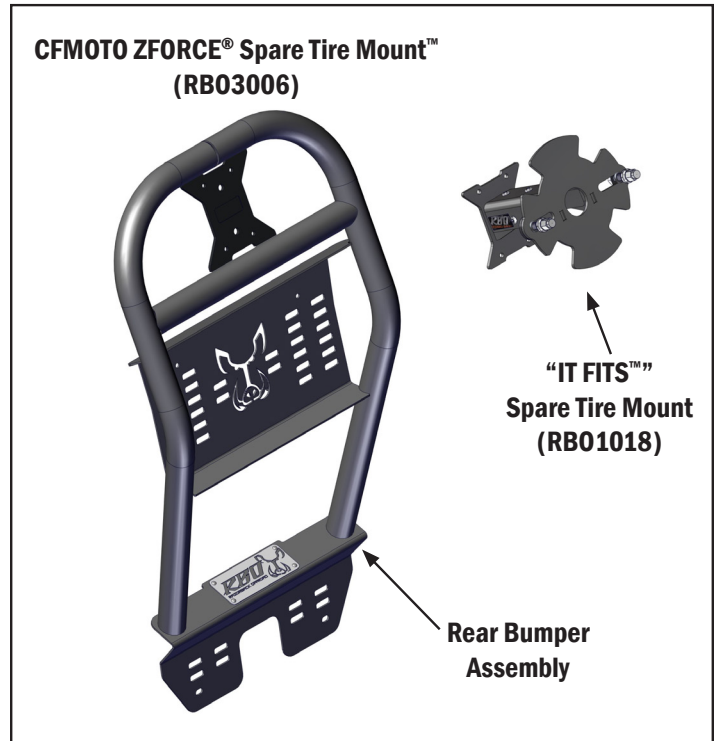
### INCLUDED MOUNTING HARDWARE

- (2) - 3/8” O Rings
- (2) - 10mm Lug Nuts
- (2) - 12mm Lug Nuts
- (2) - 10mm Studs
- (2) - 12mm Studs
- (8) - 1/4” x 3/4” Hex Flange Bolt
- (8) - 1/4” Flange Nylock Nuts
- (2) - Nut Holders



## CFMOTO ZFORCE SPARE TIRE MOUNT™

### Installation Instructions



### Remove Rear Panel and Bumpers

- Remove the six factory bolts to remove the rear panel and rear top bumpers. Save the factory mounting hardware See Fig. 1-1

-Save all the factory Hardware for future steps





- To remove the rear top bumpers, remove two bolts located on the inside of the rear panel  
See Fig. 1-2 and Fig. 1-3

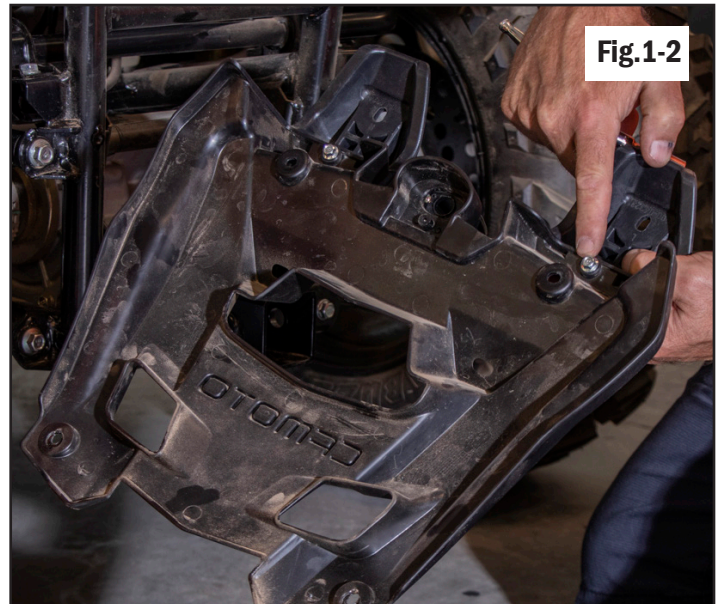


Fig.1-2



Fig.1-3

## Re-Install Rear Panel

- Re-Install the Rear Panel with the saved factory hardware  
See Fig. 2-1



Fig.2-1



## Install Bumper Assembly

- Remove the lowest factory bolts on the frame, but keep the factory hardware for installation of the bumper assembly

See Fig. 3-1 to Fig 3-3



Fig.3-1



Fig.3-2



Fig.3-3

- Use lock tight on factory hardware for installation of the bumper assembly

See Fig. 3-4



Fig.3-4

- Use factory hardware to install the bumper assembly into the lower frame mounting locations

See Fig. 3-5



Fig.3-5

- Use factory hardware to install the bumper assembly into the Top rear panel mounting locations

See Fig. 3-6



Fig.3-6

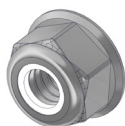
## Install “It Fits™” Spare Tire Mount

- Install the “It Fits™” Spare Tire Mount on to the rear bumper assembly with

(4) - 1/4" x 3/4" Hex Flange Bolt



(4) - 1/4" Flange Nylock Nuts



See Fig. 4-3

- Refer to pg's 4-6 for “It Fits™” Spare Tire Mount set up

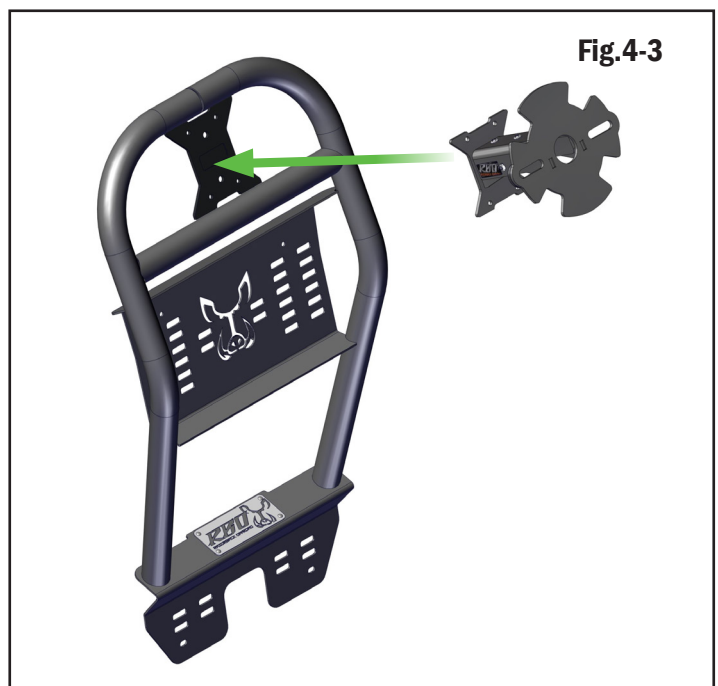


Fig.4-3





PH: (208) 696-7230 FAX: (208) 580-1900

inventive edge, LLC 3190 Industrial way, Mountain Home, ID 83647

RB00115